

Board of Education President Comments On School Reform

See Comments On Page Three.

Football Buccaneers Start The Pre-season Scrimmages

See The Details On Page 11.

High School Soccer Team Expects Winning Record

See The Report On Page 11.

The Belleville Times

Vol. 74, No. 41

Second Class Postage Paid
At Newark, N.J. (USPS 0049-220)

Published Weekly at
Belleville, N.J. 07109

Postmaster: Send address changes to:
The Belleville Times, P.O. Box 56, Belleville, NJ 07109

Thursday, September 15, 1983

35¢

Pica Casts Lone No Vote

Town Fathers Approve New Garbage Contract

By Linda Telesco

Commissioners finally cleaned up Belleville's messy garbage controversy by voting 4-1 last week to award a one-year \$598,425 contract to Browning-Ferris Waste Industries of North Jersey, the scavenger firm presently collecting township refuse.

The decision comes after Commissioners accepted bids on Aug. 18, the third time this year the controversial contract went out for bid.

At the most recent bidding, BFI was the only candidate submitting, as they had at the other two biddings, fees for one, three, and five-year contracts.

Mayor Michael Marotti, and Commissioners Joseph McGreevy, Joseph Grande, and Michael Pizzi favored the one-year contract. Commissioner Matthew Pica cast the opposing vote on grounds that he wants to "fight in court" against the Fairfield firm for submitting substantially higher bids in July and August than it had in January.

Earlier in Tuesday's session, Commissioner McGreevy moved to award BFI the three-year contract,

but failed to win a second and the motion died.

McGreevy felt the longer contract would save Belleville money in the long run. However, Mayor Marotti opted for only one year because "we need to do something about getting a scavenger right now," but hopes by next year to possibly have the municipality conduct its own collections, a recommendation made by a citizen.

The issue of the local scavenger contract has been a major controversy here since last December. At that time, Belleville's last three-year contract with L. Pucillo and Sons, Inc., the township scavengers for over 20 years, expired.

On Dec. 14, Belleville accepted bids for the new contract from only two contenders, Pucillo and BFI. BFI, the lower bidder, named prices of \$477,928 for one year, \$1,554,952 for two years, and \$2,778,992 for five years.

Commissioners awarded the Fairfield firm the five-year contract in hopes of realizing the substantial savings the figures promised over the

long haul.

However, Pucillo filed a lawsuit Dec. 31 against BFI, the township and Commissioners charging there were irregularities in the BFI bid proposal.

In March, a Newark Superior Court judge declared Belleville's new contract null on grounds that BFI had failed to submit legally required documents at it time of the original bid openings.

Assistant Township Attorney Frank Cozzarelli argued that although the documents specified were necessary, they had been submitted prior to the Dec. 28 award of the contract and did not materially affect the fairness of the bidding procedures.

Belleville appealed the judgment but unsuccessfully. In June, a three-justice panel of the Appellate Division upheld the March decision against the township's contract and ordered Belleville to rebid.

While Cozzarelli applied to the state Supreme Court for a higher hearing of the case, Belleville went out for bids a second time on July 11.

At that session, Pucillo and BFI were the only contenders and although the Fairfield firm came out the lower bidder once again, their new proposed fees soared far above the originals at \$599,000 for one year, \$1,936,497 for three years and \$3,685,742 for five years.

BFI defended the higher prices on grounds that it was not realizing a profit while operating on the January contract fees.

As permitted by court, BFI continued to provide scavenger service to the township on a per diem basis while the issue was in litigation.

According to Township Clerk Mary Lou Hood, the firm has been paid \$46,000 per month for the services. The rates are based on terms of the contract in dispute, as

(Please see 'New' on page 13.)



Raising Funds — Dennis Buckley, assistant director of the Belleville Recreation Department, presents a check to Bobby Travers and Pat Klein, a member of the Bobby Travers Leukemia Fund. The money was raised during the Recreation Department's annual carnival held last month at Municipal Stadium.

Administrators Seeking High School Principal

The search for a new principal for Belleville High School will be heating up this week.

Michael Nardiello, who took over as superintendent of schools today, announced that he along with newly appointed Assistant Superintendent of Schools Michael Lally will be conducting interviews with candidates for the high school post.

"We are hoping to interview all the candidates this week," said Nardiello on Monday. "Mr. Lally and I will be conducting the interviews and we will then make our recommenda-

tion to the School Board later this month."

According to Nardiello, there were six candidates vying for the position as of Monday morning.

"Posting of the position will continue until Sept. 20," said Nardiello, "so we are not sure that everyone interested has applied as of yet. All of the six applicants are administrators in the Belleville school system."

Lally, who served as principal of the high school for two years, was named as assistant superintendent of schools by Nardiello and approved by the School Board two weeks ago.

Commissioners Approve More Chemical Clean Up Funding

Commissioners last week unanimously approved a resolution seeking an additional \$100,000 in emergency appropriations to continue the cleanup of the Main Street toxic chemical site.

The new allocation, passed at the Sept. 6 Commission meeting, brings total emergency appropriations up to \$592,046.50 to date.

That sum exceeds 3 percent — the statutory limitation for emergency allocations — of the township's total current operating appropriations in the 1983 budget. The 3 percent max-

imum for Belleville is \$374,713.76.

Consequently, the measure approved by Commissioners also resolves to petition the director of the state Division of Local Government Services for permission to exceed the limitation, with the assurance that the emergency monies will be provided for in full in the 1984 budget.

Presently, Belleville is financing a \$198,000 cleanup and disposal of the drums on the site by Applied Technologies, a Toms River firm. Prior to that, the township paid

Peabody Clean Industry, Inc. of Linden for emergency response and subsequent chemical testing on the site at 507 Main St., the location of the now closed Research Organic-Inorganic Chemical Corp., a food-flavoring manufacturer.

The company was closed by a court order since May when several leaks from drums in the factory set off a large scale toxic scare.

Commissioners have been seeking reimbursement for monies expended on the emergency from state and federal sources.

Dr. John Greed Bids Farewell After Seven Years Here

By Ed Capparucci

Seven years ago the Belleville school district had a reputation which reached out throughout the state — and it was not a favorable one. But in recent years Belleville has been noted for both its academic and athletic achievements and the negative reputation it once wore is no longer. One of the persons directly responsible for the tremendous turn around in the school system is Dr. John H. Greed, who this week ended his seven-year term as superintendent of schools here, to take the top post in the Sparta school system.

Dr. Greed, during his tenure at Belleville, witnessed more controversies and changes than most superintendents see in a lifetime.

"When I accepted this job, I knew there were a lot of changes which had to be made," said Dr. Greed during an interview at the board offices last Friday. "When I was hired in 1976 the School Board back then told me it was seeking more credibility. The members wanted the school system to function like a business and they knew that politics played a large part in the hiring of personnel. It was part of my job to put an end to that."

Hired in February of 1976 to replace Anthony Greco, who was resigning, Greed found himself thrown into the middle of one of the school district's toughest battles — the desegregation of elementary schools. Although the School Board was able to come to terms with the desegrega-

tion problem, the trustees faced several more major controversies over Greed's term, including the decision to close Schools 1 and 2, along with the moving of the board office complex from Washington Avenue to Cortlandt Street, the past site of School 1.

But with all the turmoil and setbacks, Greed proceeded to bring the Belleville school district back to respectability.

"When I first came here the board was most concerned with its curriculum development," said Greed. "I believe that we have made substantial improvements in this area, but there is still a great deal of work to be done, especially on the elementary level."

On the secondary education level, Greed points to the transforming of the junior high into a middle school and the appointment of strong high school leaders as the reasons for the high school's success.

"The changing of the junior high to a middle school was a significant achievement," said Greed. "One thing we did not want to do when making the change was to turn the middle school into a miniature high school. That is a problem many systems have made and the students suffer from it. The principal of the middle school (Mario DiMaggio) and his staff deserve a lot of credit for the job they accomplished."

"I was also happy with the appointment of John DeCeasar and Michael Lally as principals of the high school," Greed continued. "DeCeasar was a disciplinarian and that was needed at the high school. He

fit the bill and put the school in good shape. At the same time we were grooming Mr. Lally for the job, because I knew that

one day DeCeasar would move to a higher administrative post."

Another positive aspect noted by Greed was the creation of two additions at the high school over the past seven years.

"The Town Commissioners deserved a lot of credit with helping us gain one of the additions," said Greed. "They came through with the money we needed. The vocational wing was a great step forward for the high school. It opened another avenue of studies to students who did not want to go on to college."

While Greed said he was happy with the accomplishments he saw during his term in Belleville, he admitted that politics still play a major part in the School Board.

"This present board of education is the most political board I had ever seen in my seven years here," he said. "There is no elected body that is not without politics, but I have never seen one to the extent as this board."

"Take the situation of Dr. Anthony D'Agostino and Thomas Spillane. There are two men who both served on the board as vice presidents and did an excellent job and yet neither were elected as president," said Greed. "The reasons are that Tony is his own man, who votes his conscience and Mr. Spillane does not belong to any political clique. They are loners and they serve the

School Board that way. And that is the way you are supposed to serve."

"There have been times when I would get to meetings where items that are on the agenda and should be up for discussion with the board, have been decided before I got there," he continued. "A trustee like Miss Rainone comes to board meetings at times ready to do her job and she does not realize that some of the issues had already been discussed and resolved before the meeting and before she gets a chance to vote."

Greed said that he is seeing a change in persons who are interested in serving on the School Board.

Years ago the School Board candidates were average men and women who were concerned with their children's education and wanted to play a more active part in the educational system of their community," said Greed. "Now we are getting more educated persons running for the board. Business minded people are also getting involved and that is a good sign. A School Board should be management-orientated. That is why men like Zoppi, Miele and Romano made good board members."

"I am happy with the job which was accomplished during my years here," said Greed. "There is still a lot of work to be done, but the board made an excellent choice in selecting Mr. (Michael) Nardiello



Dr. John H. Greed

as superintendent. There are many good teachers and administrators in this system and I am confident that things will con-

tinue to improve in Belleville.

"I will always be interested in the Belleville school system," he continued. "The strength of Belleville is its family image. I find the kids in this community to be very good. They conduct themselves in an adult-like manner and parents can be proud of their children here."

ZEPPPOLES

Italian Donuts

**50¢ OFF
ANY PIE**
w/coupon

FREE
1/2 dozen zeppoles
w/purchase of any pie
w/ coupon Wed. only

OPEN FOR LUNCH
PIZZA BOX

Free Delivery After 4 P.M.

751-3577 759-9628
500 Union Ave. Belleville

Raimo Opens Own Insurance Agency

A new office providing a full line of insurance services has opened recently at 94 Franklin St. in the Silver Lake section of Belleville.

The Raimo Insurance Agency is owned and operated by local resident Joseph Raimo, who has been in the insurance business for more than 15 years, most recently with the State Mutual Assurance Company.

The agency is able to provide coverage for business, home, auto, health, life, disability, personal and commercial lines of insurance and prides itself on the service it renders to its policyholders.

Being an independent broker licensed to obtain coverages with dozens of insurance carriers and drawing from his many years of experience, Raimo is often able to obtain the best possible rates and coverages for his clients.

Realizing that many people have questions on insurance, but can not often obtain information, Raimo will be pleased to answer or help with any insurance questions you may have by calling him between 9:30 a.m. and 5:30 p.m. at 751-5940. The office is opened daily from 9:30 a.m. to 5:30 p.m., Thursday evening until 7:30 p.m. and Saturday from 10 a.m. to 2 p.m.

Rhoda Semel Teaching 'Singing Self' Course

The Singing Self classes will be offered this fall. The classes are taught by Rhoda Semel, who teaches 'The Singing Self' at the New School for Social Research in New York City. "The Self that sings is the part of each one of us which is healthy, joyous and whole," says Ms. Semel. "As we learn to sing, we also learn to free the open, expressive beings that we really are from the constricted habits of thinking that limit creativity."

"If you can speak and you can hear, you can also sing and sing beautifully. The voice class combines a thorough study of vocal technique with methods of relaxation and self awareness," she continued. "Anyone who sings, or who wants to, now can experience growth for performance or personal enjoyment. Singing is a way of saying 'yes' to life."

Ms. Semel is offering a free demonstration class on Saturday, Sept. 24, at 2 p.m. For further infor-

mation, please call 338-3917. All classes are held at Ms. Semel's studio in Bloomfield.



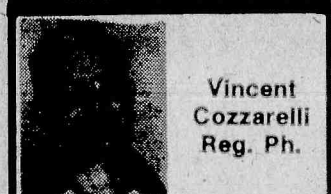
SINGING WORKSHOPS
HOLISTIC APPROACH
conducted by:
Rhoda Semel, M.A.
Classes begin end of Sept.
Evenings & Weekends
Free Demonstration
Sept. 24
call 338-3917
for further information



Rhoda Semel



Pharmacy Footnotes




Vincent Cozzarelli
Reg. Ph.

Depilatories are readily available preparations that facilitate at-home hair removal. They work by causing a breakdown in the keratin, a protein that is a primary component of hair. Keratin is composed of approximately 17% cystine. A depilatory causes a breakdown in cystine at the base of the hair follicle, which is the least hardened part. If, however, a depilatory is left on the hair long enough, the entire hair would break down and dissolve. Remember, though, that the outside layer of your skin is also made up of keratin. Prolonged depilatory contact on the skin will cause it to break down as well.

Leave all your prescription needs in our hands at ROSSMORE PHARMACY, 338 Washington Ave., 759-1968, 759-1956. "Your Doctor Knows Us—Your Doctor Trusts Us". Cameras, film, Timex watches, transistor radios, baby needs and Russell Stover candies are handled. Free prescription delivery is available. Hours: Daily 9am-10pm, Sundays 9am-9pm.

HANDY HINT:
Follow package directions exactly when using a depilatory.



Thur. Fri. Sat. Sun. Mon. Specials
September 15 thru September 19

1 lb. HOME COOKED CHOICE ROAST BEEF **'3"**
(Min. 1 lb.)

1 lb. LEAN DOMESTIC BOILED HAM **'2"**
(Min. 1 lb.)

1/2 lb. IMPORTED FINLANDIA SWISS CHEESE **'1"**

1/2 lb. HORMEL DiLUSSO GENOA SALAMI **'2"**

Have lunch with us...
Free coffee with lunch 11:30a.m.-2:30p.m.
Open 7 days a week till 10:00 P.M.

Towne 751-3935
DELICATESSEN & CATERERS
650 JORALEMON ST.
Cor. Franklin Ave., Belleville
Member of Belleville Chamber of Commerce

GET INTO GOLD!

\$25

SAVINGS WITH
THIS AD ON 14K
GOLD ARTCARVED H.S. CLASS RINGS.

Now's the time for super savings on your ArtCarved 14K gold class ring. ArtCarved backs each ring with a Full Lifetime Warranty. This offer expires November 30, 1983 and is to be used only for the purchase of 14K gold ArtCarved Class Rings.

Your Class Ring Headquarters

Sofia JEWELERS
FINE JEWELRY AND GIFTS

396 Main Street, Belleville, N.J. 07109
(201) 759-7070

BRING THIS AD

MAD MIKE

BLOOMFIELD

Exit 148 Garden Stat Pky.
237-241 Bloomfield Ave.
Bloomfield, N.J. 743-7900
Mon.-Fri. 10-7 — Sat. 10-5

Price subject to availability. Quantities limited. No rain checks.

Flashdance *What a feeling*
What a price!

\$9.99 with any new Mad Mike
Video Membership

**\$1 PER DAY
MOVIE RENTAL**

Video Cartridges for the Atari 2600
\$9.99

From Atari:

Realsports Volleyball, Football, Baseball
Vanguard, Phoenix, Centipede, Earthworld,
Fireworld



From Activision:

Plaque Attack, Megamania, Freeway,
Spider Fighter, Sequest, River Raid,
Pitfall, Star Fighter



\$9.99

From Coleco:

Venture, Mousetrap, Carnival

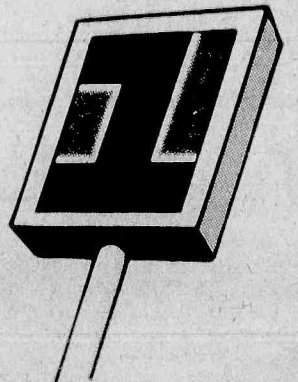


\$9.99

EXTRA SAVINGS!!
ASTEROIDS - PAC-MAN - BERZERK
\$6.66

NEED A HOME IMPROVEMENT LOAN?

**FIRST DeWITT
Is The ONE
To Remember**



Home improvement adds space, convenience, comfort and EXTRA VALUE. And there's no time like the present to start and no place better than First DeWitt for loans with favorable terms and moderate payment schedules. Stop by... we'll be glad to help!

CHECK FIRST DeWITT FOR FINE FINANCIAL SERVICES

SHORT- AND LONG-TERM SAVINGS CERTIFICATES • PASSBOOK SAVINGS
BANK BY MAIL • HOLIDAY & ALL PURPOSE CLUBS
IRA ACCOUNTS • DIRECT DEPOSIT OF SOCIAL SECURITY & GOVT. CHECKS
MORTGAGE LOANS • HOME IMPROVEMENT LOANS • STUDENT LOANS
CHECKING PLUS 5 1/4% INTEREST • DRIVE-IN-BANKING



**First DeWitt
Savings**



BELLEVILLE • BLOOMFIELD • CEDARGROVE • HOPATCONG

MAIN OFFICE: 463 Washington Ave., Belleville • BLOOMFIELD CENTER OFFICE: 667 Bloomfield Ave., Bloomfield.
BROOKDALE OFFICE: Broad St. & Watchung Ave., Bloomfield • CEDAR GROVE BRANCH: 532 Pompton Ave., Cedar Grove
FOREST HILL OFFICE: 80 Belleville Ave., Bloomfield • HOPATCONG OFFICE: Sharp Ave. & Hopatchung Rd.
WATKINS OFFICE: 20 Watkings Ave., Bloomfield

751-2800

IN HOPATCONG CALL 396-0900

Governor Calls For Higher Teacher Salaries

Proposed Education Reform Program Draws 'Mixed Emotions' From Purdue

By Ed Capparucci

Gov. Thomas Kean unveiled an educational reform package last week, which he feels will raise the standards for both students and teachers, but the president of the Belleville Board of Education has "mixed emotions" about the state leader's project.

"I can understand what he is trying to accomplish," said Grace Purdue, during an interview last Friday afternoon. "There's no doubt that the entire school system throughout the state can be improved, but I would like to see it done another way."

The governor's plan included tougher standards for bilingual students, sterner classroom disciplinary rules, and a four-point plan for attracting and keeping better teachers. The governor also said that attracting better candidates should be a top priority for school officials, and he proposed salary increases as a way of accomplishing this.

"It would be nice if we could start teachers off with higher salaries," said Mrs. Purdue, "but where will the money come from to do that?"

The governor said he wants to guarantee a starting salary of \$18,500 to any beginning teacher meeting the new state standards. He also said that any teacher in the state making less than \$18,500 could qualify for the higher salary by passing the competency exam that will be given to the interns. Under his proposal the state would pay the

school districts that hire new teachers the difference between the first step of the district's salary guide and \$18,500. Belleville's starting salary for teachers is \$14,250. Therefore the state would be required to contribute \$4,250 to aid Belleville in paying first-year teachers.

"When you think about it, the money, whether it comes from the state or the school district, still comes from the same source — the taxpayers," said Mrs. Purdue. "We would all like to see our teachers receive higher salaries, but I do not agree with the governor's plan."

The proposal also calls for the creation of a master-teacher program, in which five school districts would be selected to nominate up to 5 percent of their teachers as master teachers and would qualify to receive \$5,000 bonuses.

"I do not totally understand this proposal," said Mrs. Purdue, "but I fully agree that instructors who have demonstrated outstanding ability should be recognized for their achievements. I am all for a merit system."

The governor's plan also calls for a requirement that all bilingual students pass a high school graduation test in English before receiving their diplomas.

"At the moment we do not have many bilingual students who have a problem adapting to the English language," said Mrs. Purdue. "But we are getting more and more

younger bilingual students. I believe it is a good idea for those students who pass an exam, but I believe that most bilingual students who go through the ranks of the Belleville school system are passing English exams by the time of their high school graduation."

The final plan of the governor's project is a general call for tougher disciplinary rules in the schools. He told the legislature he has asked Saul Copperman, commissioner of education in New Jersey, to draw up a list of actions school districts might take to deal with discipline problems.

"I do not know what types of measures he has in mind as far as disciplinary actions," said Mrs. Purdue, "but I believe that discipline starts at home. A child cannot get away with something at home and expect to act properly in school."

"It seems that our high school students are becoming more and more mature and well-behaved," she continued. "Rebellion is coming earlier and earlier for kids these

days. It seems that we are dealing with the 9- and 10-year-old wise guys, instead of the older kids who used to create a problem."



Grace Purdue

'Where is the money?'

art galleries
royale

OIL PAINTINGS
All Subjects

Largest Gallery in New Jersey
Lithographs & Prints
Photos Painted on Canvas
Stock & Custom Frames
Complete Framing Department

500 Stuyvesant Ave.
Lyndhurst, N.J.
438-3075



Vivitar 2600
Inexpensive
automatic flash

- ☐ ASA 100/ft. guide no. 60 for plenty of "reach"
- ☐ Two automatic ranges cover up to 60 feet
- ☐ Up to 650 flashes; recycles in 4 seconds
- ☐ Auto check indicator for correct exposures; auto-off circuitry conserves batteries
- ☐ Easy-to-use, PC cord included

'26'

Vivitar's Got It All In Flash!

MILT'S PHOTO

183 Washington Ave.

Belleville, N.J. 759-0905



Chamber of Commerce Holding Its Annual Sidewalk Sale Soon

The Belleville Chamber of Commerce is sponsoring its annual sidewalk sale days on Friday, Sept. 30; and Saturday, Oct. 1.

Each year the chamber hold two sidewalk sales for the pleasure of Belleville shoppers. Bargain hunting will run from 10 a.m. to 6 p.m. on both days, along Washington Avenue.

Schail C. Frank D.P.M.

takes pleasure in announcing that

Gary Quartello D.P.M.

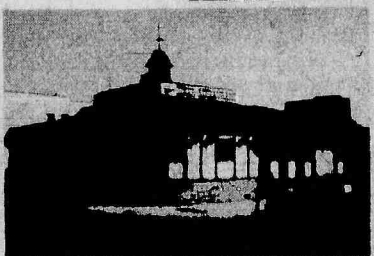
will hereafter be associated with his practice of Podiatric Medicine and Foot Surgery

Clara Maass Professional Center West
50 Newark Ave. Suite 307

Hours By Appt. Belleville, N.J. 759-6298

The Choice of the People

7 Days
24 Hours
Delicious
Salad Bar!



Italian
Specialties!
Steaks
& Chops

All baking done on premises • Homemade pastries
Children's Menu Available
Special Breakfast Menu: 6-11 a.m.

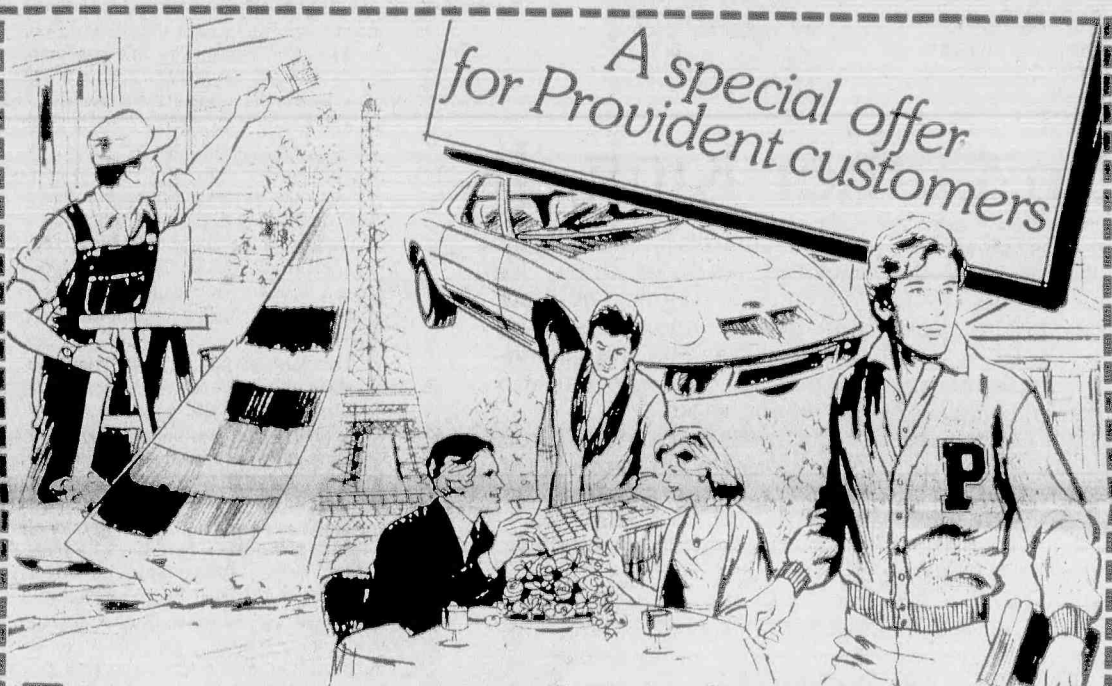
Daily Businessman's Lunch: 11 a.m.-3 p.m. Salad Bar Open 11 a.m.-10 p.m.
ALA CARTE and COMPLETE DINNER MENU

We're Always Open

WILLIE'S
DINER-RESTAURANT

9 State St., Bloomfield

Call 748-7414



Fast, convenient Instalment Loans

from \$1,000 to \$25,000

to help you do the things you want, now!

Quick, considerate, confidential consideration. Flexible repayment terms.

This offer available until November 30th, 1983.

As a valued customer, you can qualify for reduced rates on a personal, auto or home improvement loan...

Save up to
2 1/2%
per year

Maintain minimum balance in your account	Get this rate reduction on your loan
Passbook and/or Statement Savings \$1,000	1% per yr.
Checking Accounts \$ 500	1 1/2% per yr.
Money Market \$2,500	1 3/4% per yr.
N.O.W. Account \$1,000	1 3/4% per yr.
Provident customer 2 or more years	1 1/2% per yr.
TOTAL POSSIBLE REDUCTION	2 1/2% per yr.

With full discount you can obtain loans as low as

Existing Rate	↓
NEW CAR 13% per yr.	10 1/2% per yr.
USED CAR 16% per yr.	13 1/2% per yr.
PERSONAL 18% per yr.	15 1/2% per yr.
HOME EQUITY 15% per yr.	12 1/2% per yr.

Why put off any longer those things which will make your life easier, pleasanter or more convenient? You can buy that new car, redecorate the house, go on a vacation, pay for Junior's education or just consolidate your debts. And if you're a Provident customer you can save up to 2 1/2% a year on our regular instalment loan rates.

It's our way of saying "thank you" for being a Provident customer. If you're not one, and need a loan, now's a good time to become one.

ESTABLISHED 1839

THE OLD BEEHIVE



PROVIDENT SAVINGS BANK



EQUAL OPPORTUNITY LENDER

32 offices throughout New Jersey • Member FDIC

BLOOMFIELD CENTER: 11 Broad Street / BROOKDALE: 1260 Broad Street
AMPERE PKWY.: 100 Bloomfield Avenue / BELLEVILLE: 208 Washington Street

The Belleville Times



Published every Thursday.
The Times concerns itself
with printing information
with the best interest of
the residents of Belleville.
Telephone: (201) 759-3200

Publisher
FRANK A. ORECHIO
Editor
EDMUND CAPPARUCCI
Social Editor
HELEN MAGUIRE
Advertising Coordinator
CELESTE FEDERICO
Production Manager
DAVID SALATA
Annual Subscriptions:
Regular: \$12 Senior Citizens: \$7
To Subscribe call 759-3200

Our Police Station

Apparently, there are at least three members of the township commission that are committed to maintaining the police station at its present Washington Avenue location.

Fortunately, Belleville's Township Commissioners are reasonable men. The record shows that veteran commissioners have changed their minds, once they were persuaded that changing conditions and new circumstances were sufficient to require a re-

examination of an old position.

It doesn't surprise us that township commissioners are considering the construction of a new police headquarters at its present location. The final decision should be in the public interest.

Frank A. Orechio

Martin Luther King, Jr.

Last weekend 250,000 people gathered at Washington Memorial to mark the twentieth anniversary of the occasion when the late Dr. Martin Luther King, Jr. aroused the nation with his speech calling for the end of racial prejudice and intolerance. "Free at last, free at last" exclaimed Dr. King.

But one wonders as he looks about America today if freedom in its true sense is experienced in today's American democracy. We don't think it is.

Racial prejudice is still present twenty years after Dr. Martin Luther King's speech. Bigotry is about us — all one need do is remember the recent television pictures of the Klu-Klux-Klan. As the man said — "We have a long way to go baby, before true racial and ethnic equality is achieved" — and this, despite the fact that the constitution of the United States makes it clear that Americans are born equal under the law.

Once we go beyond the laws of this great country, the fact still remains that unless a

person controls his passions, his desires, and his fears, he becomes a prisoner of those very forces — and thus — he no longer is free. But this circumstance is one we can do something about.

Last weekend's Washington rally was for a just cause but it missed its target because the speeches, for the most part, were attacks upon the Reagan administration policies. There is no doubt the progress of civil rights is closely associated with presidential politics but we believe there was too much emphasis on Reaganomics and not enough emphasis upon the principles for which the late Dr. Martin Luther King, Jr. lived and died.

We hope to see the day when we too can join in the refrain "Free at last, free at last."

Frank A. Orechio

Capital Punishment

The death penalty is anathema to many people. Many times we have had personal doubts about the right and wrong of capital punishment.

But every once in a while a death penalty sentence comes to our attention that reinsures the rightness of capital punishment. Last week Jimmy Lee Gray was executed in Mississippi's gas chamber. He was executed for the slaying of 3-year-old Deressa Jean Scales, who was kidnapped from her family's apartment on June 25, 1976. Jimmy Lee Gray drove this 3-year-old to a remote area on the Mississippi Gulf Coast, raped and sodomized her — murdered her by holding her head in a muddy ditch and then threw her body from a bridge into a creek. At the time of the little girl's death, Mr. Gray was on parole after serving seven years of a 20-year prison term for killing his 16-year-old girlfriend.

Jimmy Lee Gray's mother twice called on Mississippi authorities to execute her son.

Richard Scales, the father of the 3-year-old murder victim, commented, "Even in prison Jimmy Lee Gray had been able to talk, to breathe and to laugh and he had taken all these things from my little girl. He didn't have the right to continue living."

Our head tells us capital punishment brutalizes the human race. Our heart tells us Richard Scales is right.

For Jimmy Lee Gray the gas chamber was too easy a death — he should have been made to suffer the torture and agony that 3-year-old Deressa Jean Scales endured.

Frank A. Orechio

Letters in Print

State Employees Suffer During Contract Talks

To the editor:

The state workers of New Jersey, in good faith, voted in April 1981 to appoint the Communications Workers of America as their bargaining agent. C.W.A. represents 32,000 white collar state workers. Six months ago negotiations were begun with the State of New Jersey and the union toward a new contract, to date nothing has been accomplished except hard feelings on both sides.

The recent contract the state has offered the C.W.A. membership is: July 1, 1983, nothing; January 1, 1984, nothing; July 1, 1984, 3 percent; January 1, 1985, 4 percent; July 1, 1985, 3 percent; January 1, 1986, 5 percent.

A one time \$700 bonus has been offered. This "bonus" is considered overtime and is to be paid in two installments — \$300 in January of 1984 and \$400 in July of 1984. After taxes, disability, etc., the sum total remaining out of the "bonus" is approximately \$490. This is considered a bonus?

The state has offered a needed increment step for the clerical staff workers starting July 1985. Why wait till then, what about the workers who are there now and have been there for many years — top of their salary scale with nothing to look for in the way of a salary adjustment?

I feel that the contract that is offered right now is unfair to the C.W.A. membership, yet the C.W.A. national vice president has accepted it and told us to accept the package as offered by the state.

We, the state workers, are being used and abused by both parties — C.W.A. and the State of New Jersey. The governor and his legislature have turned around and made the clerical state worker feel like second class citizens.

He has given another union a clothing allowance for their uniforms... uniforms which are supplied out of state funds. That is a total outrage. This clothing allowance is supposedly for the maintenance of these uniforms and that is fine. But what about the workers who have to supply their own apparel for work and maintain them out of a base salary, a base salary which is below cost-of-living wages. I see the clothing allowance for the other union as an extra bonus, which I feel the C.W.A. membership should receive as well.

C.W.A. "the National," I feel has sold us out for an agency shop fee. All the "National" is interested in is how

much money they can get from the state workers. I feel that the "National" has to earn this money and our membership dues — to this date they have not.

At one time I really believed in and supported this union, but now I do not! They will have to do a lot more for the state workers before I would ever believe in this union again. Now they once more have to work for my trust and other members' trust.

Good luck to the governor and to C.W.A., I hope the deals you made with one another were worth stabbing the state workers in the back!
Name withheld by request

Finds Golden Upsetting

To the editor:

Concerning James R. Golden's column of The Times' Sept. 1 edition. I find Mr. Golden not only an incapable writer, but also an ignorant one.

What keeps The Times publishing his idiot mouthings, I don't know, unless he pays for his own column, he owns a piece of the paper, he is related to the Orechios, or he has some political pull in Nutley. The man's writings are absolutely horrendous. His columns have no place in any respectful, responsible newspaper. In any case, his writing is on the eighth grade level. Much of what he tries to say is muddled and confusing. Yet The Times goes on publishing his junk.

For over 50 years the Democrats have played into the hands of the communists until now we are almost incapable to deal with their power. Most of Mr. Golden's friends are the politicians who favored friendship with communists. They helped to strengthen the Reds until they now virtually run amok among civilized people of the world. Should not these traitorous democrats be called into account for creating a monster which will someday destroy us all? Mr. Golden can only attack Reagan. I have no trouble with understanding our President. Some columnists do. That is their problem, not the problem of intelligent people.

In my opinion, Reagan is the greatest president since Washington.

Mr. Michael Giordano
19 Valley St.

Town's Bulletin Board

(Items for the Belleville Bulletin Board may be sent to P.O. 56, Belleville, N.J., dropped off at 800 Bloomfield Ave., Nutley, or telephoned to the Times/News at 759-3200. There is no charge for this public service. Belleville organizations are urged to list future events well in advance so the weekly listing of events can serve as a "clearing house" for other groups attempting to avoid conflicting dates.)

THURSDAY, SEPT. 15

1 p.m. Senior Citizens' Club sponsored by Essex County Department of Parks. — Belleville Avenue in the park.

6:30 p.m. Belleville Kiwanis Club dinner meeting. — San Carlo Restaurant, 620 Stuyvesant Ave., Lyndhurst.

6:30 p.m. Optimist Club meeting. — Branch Brook Manor.

7:30 p.m. Patrolman's Benevolent Assoc. (PBA) meeting. — Little League Building.

8 p.m. Michael V. Marotti Civic Association.

8:30 p.m. Younginger-Alden Jr. Auxiliary to Post No. 275, Veterans of Foreign Wars, regular meeting — Post Home, 17 Belleville Ave.

8:30 p.m. Al-Anon meeting for relatives of alcoholics. New members should arrive at 8. For information, call 672-7231. — Wesley Methodist Church, 225 Washington Ave.

FRIDAY, SEPT. 16

1 p.m. Belleville Senior Citizens' Social Club meeting. — Recreation House, Franklin Avenue at Mill Street.

SATURDAY, SEPT. 17

10 a.m.-4 p.m. Flea market and cake sale. — Belleville Reformed Church parking lot, Main and Rutgers streets. For more information call 759-2207.

1-4 p.m. Volunteer Expo sponsored by the Girl Scout Council of

Greater Essex County. — St. Thomas the Apostle School, 50 Byrd Ave., Bloomfield.

MONDAY, SEPT. 18

1 p.m. Senior Citizens Club sponsored by Essex County Department of Parks — Belleville Avenue in the park.

8 p.m. Board of Education public executive session. — 190 Cortlandt St.

8 p.m. Elks Lodge meeting. — 383 Washington Ave.

8:30 p.m. Belleville Knights of Columbus Council 835. — 94 Bridge St.

TUESDAY, SEPT. 20

9:30 a.m. Belleville Old Guard meeting — K of C Hall, 94 Bridge Street.

1 p.m. Belleville Senior Citizens Club. — 125 Franklin Ave.

Moose Club officers' meeting — 22-28 Eugene Place.

WEDNESDAY, SEPT. 21

9:30 a.m. Belleville Retired Men's Club. — Fewsmith Church, 444 Union Ave.

12:15 p.m. Belleville Rotary Club. — Forest Hill Field Club.

1 p.m. Valley Senior Citizens meeting at Dutch Reformed Church. — 171 Main St.

1 p.m. Essex County Department of Parks Senior Citizens' Club. — Belleville Avenue in the park.

6:30 p.m. Branch Brook-Belleville Kiwanis Club. — Biase's Restaurant, 451 Bloomfield Ave., Newark.

7:30 p.m. Recovery Inc., regular meeting. — Parks Department, 44 Park Ave.

8 p.m. Italian-American Civic Association and Auxiliary — Montgomery Church, Mill Street.

8 p.m. Essex County Multiple Sclerosis Association — Cerebral Palsy Center (behind Clara Maass Medical Center).

Golden Comments

By James R. Golden



The revelations of probable Belleville School Board impropriety, if not wrongdoing, as disclosed by this newspaper casts a pall of uncertainty and doubt about the dedication and desire of some board trustees to dutifully comply fully with the statutes set down by the state as spelled out in New Jersey public school law 18A:6-8.

That law, last amended in 1947, presently in effect provides that "no person officially connected with, or employed in, the public school system of this state or in any state educational institution, shall be an agent for, or be in any way pecuniarily or beneficially interested in, or receive any compensation or reward of any kind for, the sale of any textbooks, school apparatus or supplies of any kind, for use in the school district or in the stated educational institution with which he is connected or by which he is employed or within the state or part thereof over which his jurisdiction extends, upon penalty of removal from office or revocation of his certificate to teach or to administer, direct or supervise the teaching, instruction or educational guidance of pupils in the public schools, but the prohibition of this section shall not prevent any person from receiving royalties upon the sale of any textbook of which he is the author."

Prior to the June 13, 1983 board public business meeting a board member requested Mr. Gerard Gruenfelder, the school business administrator, to obtain information on a company by the name of Creative Productions. The trustee was advised that they provided screening materials for pre-school children with handicapping conditions.

Mr. Gruenfelder experienced considerable difficulty in obtaining information whatsoever on Creative Productions. He called the Special Services department, and when he spoke to them, they seemed uncertain and uneasy. He left a message requesting that Dr. Chirico return his call.

In a memorandum letter to Dr. Greed, school superintendent, on the subject Creative Productions dated June 21, 1983, from Mr. Gruenfelder, Dr. Greed was advised that Dr. Chirico did return Mr. Gruenfelder's call. That when asked if Creative Productions had a phone number Dr. Chirico was very curious concerning the reason for the investigation and wanted to know how it came up, why it came up, etc. He was advised it was a follow up on a request made by the Board of Education.

When pressed further, Dr. Chirico asked what specific information was sought. He was then asked, "who the principals of the company were," he quietly responded by saying, "I am."

At this point Mr. Gruenfelder immediately brought this information to Dr. Greed's attention. Duplicate copies of all the paper work involved with the transaction were made and payment of the invoice was withheld pending further clarification and direction.

Mr. Gruenfelder concluded his letter to Dr. Greed stating, "I have already discussed with you what further steps I believe are appropriate in this situation, but I will wait to hear from you for further direction, please advise."

Dr. John T. Greed, superintendent of the Belleville Public School system, in a letter to Dr. Anthony P. Chirico dated June 23, 1983 sent to his home address after a June 21 conference informed Dr. Chirico that, "I believe that you are guilty of unprofessional conduct and have violated Title 18A:6-8. In my opinion, you acted as an 'agent' for your own firm."

Dr. Greed emphasized that the opinions expressed in regards to this matter his own, an it is solely my suggestion to you that you resign your position. Dr. Greed said, "I will be guided by their (Board of Education) directives concerning the next course of action." Carbon copies of this letter were sent to School Board members and board attorney Lawrence Schwartz.

The next day Dr. Chirico, director of Special Services in the Belleville school system, wrote Dr. Greed and said, "I wanted to keep my position and would not want to resign." Apparently leaving his fate in the decision of the school trustees.

Notwithstanding the statute and intent of the law, the views of the school superintendent and the outraged sentiments shared by most of the citizenry of this community the school trustees by a 5-2 decision merely slap the wrist of what appears to have been a "plea bargain" whitewash of a seemingly sordid affair that should be brought to the attention of the State Commissioner of Education to provide the determination of both the board's action and the offending principal.

Suppertime Talks — Christina Rossetti

By Russell Roomelle

"Come to me in the silence of the night;
Come in the speaking silence of a dream;
Come with soft rounded cheeks and eyes as bright
As sunlight on a stream;
Come back in tears,
O memory, hope, love of finished years....
Yet come to me in dreams, that I may live
My very life again though cold in death;
Come back to me in dreams, that I may give
Pulse for pulse, breath for breath:
Speak low, lean low,
As long ago, my love, how long ago."

Christina Georgiana Rossetti. When I first read her poems, this greatest of English woman poets, I was entranced. I fell in love with her, unabashedly. I still retain that

romantic pang of 35 years ago. Later I was to share it with Emily Dickinson, America's greatest woman poet. Rossetti was, I must admit, a quest in my early years. She never married, although she could have, many times. If only I had lived then and joined the Pre-Raphaelites in their quest for absolute beauty....

Christina Rossetti nearly became the poet laureate, after Tennyson, but that after all was was Victorian England. She was devoted to her mother — and they endured poverty for many years — and to the High Church Anglican faith (a sister became an Anglican nun). She wrote much devotional poetry:

"Give me the lowest place, not that I dare
Ask for that lowest place, but Thou hast died
That I might live and share
Thy glory by Thy side.
Give me the lowest place; or if for me

That lowest place too high, make one more low
Where I may sit and see
My God and love Thee so."

Yet her early poems and her Nursery Rhyme Book found another nature within this complex Rossetti woman:

"What does the bee do?
Bring home honey.
And what does Father do?
Bring home money.
And what does Mother do?
Lay out the money.
And what does baby do?
Eat up the honey."

Her famous brother, the painter-poet, Dante Gabriel Rossetti, was more of the world. He and his sister, however, retained an almost unnatural sensuousness — not sensuality, mind you — but the ability to make words express emotions that many critics then considered highly intimate. Christina could thus write: "Sweet though that I may yet live and grow green,
That leave may yet spring from the withered root,
And buds and flowers and berries half unseen.
Then, if you haply muse upon the past,
Say this: Poor child, she has her wish at last;

Barren through life, but in death bearing fruit."

For some reason, the feminists have ignored Christina Rossetti. Perhaps they cannot understand the devotion to Christ. Perhaps they cannot understand the solitariness. Perhaps they cannot understand the humility. Perhaps the feminists least understand what a woman really is.

She died of cancer December 29, 1894, at 64. It is thought that she touched and was touched by a few men. The word is "touched."

That most difficult to please critic, Paul Elmer More, believed the following was the most beautiful poem ever written by Christina Rossetti — or by any woman:

"Passing away, saith the World, passing away:
Chances, beauty and youth sapped day by day:
Thy life never continueth in one stay.
Is the eye waxen dim, is the dark hair changing to grey
That hath won neither laurel nor bay?
I shall clothe myself in Spring and bud in May:
Thou, root-stricken, shalt not rebuild thy decay
On my bosom for aye. Then I answered: Yea.

Passing away, saith my Soul, passing away:
With its burden of fear and hope, of labor and play,
Hearken what the past doeth witness and say:
Rust in thy gold, a moth is in thine array;
A canker is in thy bud, thy leaf must decay.

At midnight, at cockcrow, at morning, one certain day
Lo, the Bridegroom shall come and shall not delay:
Watch thou and pray. Than I answered: Yea.

Local Woman Directing NLT Play

Nutley Little Theatre will open its 1983-84 season Sept. 23 with the production of "Tribute," directed by Betty Rovell of Belleville. The play will be held at the NLT Barn on Erie Place.

Cast members for the production include Frank McCormick, Robert Diachsyn, Leon Cohen, Vicky Frank, Joan Skal, Betsy Newberry and Lin Weber-Cort. Kathy McDonough is the stage manager.

Performances will be held Sept. 23, 24, 30, Oct. 1, 2, 7 and 8. The Oct. 1 performance is already sold out, while the Oct. 2 show is a Sunday matinee beginning at 3 p.m. Call the Little Theatre for ticket information at 667-5492. The NLT Barn is located on Erie Place, just off Brookfield Avenue and adjacent to Yantacaw School.

GANTNER'S INC.

Hardware - Dept. Store
160 Franklin Ave., Nutley
Hardware - Housewares - Home Furnishings - Paint
Plumbing - Glass - Electrical Supplies

First Floor 20% Off

All Correlle Ware
All Revere Ware
All T-Fal

All Corning Ware
All Farber Ware
All Handbags

Paint Specials

Dutch Boy - Interior Latex Flat
Dutch Boy - Semi Gloss Latex
All Frisco Paint
Dutch Boy Alko House Paint

\$9.25 gal.
\$12.20 gal.
\$1.00 off gal.
\$13.95 gal.

Basement Sale 20% Off All Items

Lamps & Lamp Shades - Towels - Sheets - Throw Rugs
Pillows - Toilet Seats - Children's & Infant Ware
Ironing Boards - Luggage & Mirrors

Mon. & Fri.

9:00 a.m. to 8:15 p.m.

Tues., Wed., Thurs. & Sat.

9:00 a.m. to 5:45 p.m.

667-6622

Sale Sept. 14 thru 24th

VALENZA OPTICIANS OF NUTLEY



Presents

10th ANNIVERSARY SALE

— Eyeglasses —

We'll give you a

FREE FRAME

When you have your prescription filled.
Pay only for the the Lenses!

Choose from a selected group of frames for Men, Women & Children, including a Designer Frame.

ONE LOCATION ONLY

357 Franklin Ave., Nutley

661-3451

Opp. The Post Office

This Promotion Excludes All Other Discounts
Effective 9/8/83

Jacki Sorensen's

The Original!
AEROBIC DANCING



New!
Aerobic Workout
Coed Classes

- Sweat & smile to upbeat contemporary music
- Choreographed for non-dancers
- Burn Fat & Lose Inches
- Gain Youthful Energy
- The "get-it-all-together" approach that shapes up your figure
- Enjoyed by hundreds of thousands of students since 1971!

- Drop-in when it "fits" your schedule
- Back to Basics
- High Calorie Burning
- Extra Flexibility
- Dynamic Muscle Firming Floorwork
- It's JSAWI (Jacki Sorensen's Aerobic Workout)

a.m. and p.m.
classes —

— Nutley —
Franklin Reformed Church
Italian American Club

— Belleville —
Christ Episcopal Church

— Kearny —
Trinity Episcopal Church
STARTS
SEPT. 19

Call Now!
622-2008

CUSTOMIZED LOANS • AUTO • HOME IMPROVEMENT • SECOND MORTGAGE

for a LOAN
tailored to your needs
at rates you can afford . . .

come to Security National Bank & Trust Company. If you are in the market for a new car or plan to make an addition to your home, we can custom tailor an installment loan to meet your immediate or long range requirements . . . you will find our loan rates attractive and our terms flexible. Choose from any one of our conveniently styled loan packages.

NEW AUTO LOANS

12.50% Annual percentage rate, 12 to 48 months.

Upon approval we will give you up to 90 days to shop for your car. Monthly payments for \$5,000. for 48 mos. \$135.63 per mo.

HOME IMPROVEMENT LOANS

13.50% Annual percentage rate, 12 to 48 months. Over 48 months 14.00% APR.

No application or appraisal fees or prepayment penalty. Monthly payments for \$15,000 for 120 mos., at 14.00% \$249.40 per mo.

Second mortgage financing available over \$25,000.



Security National Bank & Trust Company
of New Jersey

NEWARK 07102
Bank and Halsey Sts.
643-5700

NUTLEY 07110
213 Harrison St. 431 Kingsland St.
661-5110 661-5121

TRUST OFFICE
FIRST
Roseland, N.J.



EQUAL
OPPORTUNITY
LENDER

Member FDIC

**A Great Lifestyle is
a lot easier to swing.**

**With a Condominium
at
Parkbrook
Mansions**



1 Bedroom Duplex from \$68,900
80% Sold Out — Only 3 Left
A Select Few — For a Select Few

**Parkbrook
Mansions**
Condominiums Homes

govel
REALTORS
201 751 7500
CONDOMINIUM SPECIALISTS
727 Jorammon Street, Belleville



Maureen Weir — Stephen Drake

Maureen Weir, Stephen Drake Are Engaged to Be Married

Mr. and Mrs. Douglas S. Weir of 136 Overlook Ave., Belleville, announce the engagement of their

daughter, Maureen Ann to Stephen Paul Drake, son of Mr. and Mrs. Richard H. Drake of 21 Reservoir Place, Belleville.

Miss Weir, an alumna of Belleville High School, is a secretary in the medical research department at Hoffmann-LaRoche, Nutley.

Mr. Drake, also a Belleville High School graduate, attends Rutgers University College of Engineering.

Rosary Altar Society At St. Anthony's Begins New Season

St. Anthony's Rosary Altar Society has begun its new season. All women of the parish are invited to become members of the society.

Officers for the new year are Lee Casale, president; Ange Chimento, vice president; Eleanor Nigro, treasurer; Irene Prezioso, recording secretary and Jo De Fabbio, corresponding secretary.

Hoffmann-LaRoche Flea Market Sept. 24 In Parking Lot 906

The Hoffmann-LaRoche Employee Association will hold its annual flea market Sept. 24, 9 a.m. to 3 p.m., in parking lot 906, Kingsland Street at the foot of Cathedral Avenue.

Rain date is Oct. 1. Free parking. Free admission.

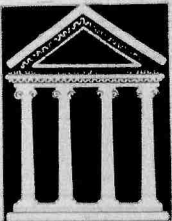
PARK MANOR NURSING HOME

Dedicated to Better Patient Care
Specializing in Female Patients
PROFESSIONAL NURSING STAFF
REHABILITATION PROGRAM
PHYSICAL THERAPY
OXYGEN FRACTURE EQUIPMENT
SPECIAL DIETS

- AGED
- CONVALESCENT
- CHRONICALLY ILL
- POST-OPERATIVE

23 Park Place, Bloomfield
743-7772

Member of NJ American Nursing Home Assn.
Professional Care in a Home-like Environment



WRITE OR CALL FOR
127 COURSE
CATALOGUE
Most classes are held at the
Montclair High School on
Monday & Tuesday evenings,
starting Oct. 3 & 4, but there
are now many daytime
classes. Fees are very low,
averaging \$32 for a 10-week
course.

ADULT SCHOOL OF MONTCLAIR

UNUSUAL NEW COURSES

Mystique of Power, Economic Problems & Policies, American Impressionism, American Antique Accessories, Cultural Anthropology, One Day Adventures, Retirement Planning, Senior Citizen Housing Alternatives, College Admissions Workshop, Preventive Medicine, Graphic Arts, Microcomputers, Photography, Interior Design, Drawing & Sketching, Gourmet Cooking, Holiday Decorations, Quilted Clothing, Smoking, Tailoring, Sewing, Journalism, Big Band Jazz.

FOR CATALOGUE AND INFORMATION
Call 744-0638
or write Adult School of Montclair,
Montclair High School, Montclair, N.J. 07042

Jeanne Fornarotto, Kevin Finnan Plan Wedding Next Fall

Mr. and Mrs. Joseph Fornarotto of 523 Union Ave. announce the engagement of their daughter, Jeanne Lynn, to Kevin Gerard Finnan, son of Mr. and Mrs. Gerard Finnan of Waldwick.

Miss Fornarotto, an alumna of Belleville High School, attends Montclair State College.

Mr. Finnan, a graduate of Waldwick High School and Rutgers University, is a graduate student at New York University where he is working on an MFA degree.

Engagement Is Told Of Patricia Hill To Jonathan Baker

Mr. and Mrs. Nestor L. Hill Jr. announce the engagement of their daughter, Patricia, to Jonathan Baker, son of Rev. and Mrs. Otto Baker of Clifton.

Miss Hill, a graduate of Belleville High School, is a senior at Rutgers University, Newark and employed at Belleville Pathmark.

Mr. Baker, an alumnus of Clifton High School, is with Fireside, Clifton.

Storks

Thomas P. Caulfield Jr.

A second child, a son, Thomas Patrick Jr., was born to Mr. and Mrs. Thomas Caulfield of 110 Brighton Ave. Aug. 8 at Clara Maass Medical Center. Birth weight was 11 pounds. He joins Erin Morgan, three.

Mrs. Caulfield is the former Maureen Morgan, daughter of William J. Morgan Sr. of East Orange. Mr. Caulfield, son of Mr. and Mrs. Michael Caulfield of Barefoot Bay, Fla., is with N.J. Bell Telephone Co., Jersey City.

Jacklyn M. Place

A first child, a daughter, Jacklyn Michelle, was born to Mr. and Mrs. Kenneth Place of La Mesa, Calif., Aug. 18 at Grosmont Hospital, San Diego, Calif. Birth weight was seven pounds, two ounces.

Mrs. Place is the former Denise Broxmeier, daughter of Mr. and Mrs. John Broxmeier of Kearny. Mr. Place, son of Mr. and Mrs. Kenneth Place of 94 Nolton St., owns a landscape equipment company in Spring Valley, Calif.

Christopher W. Kellenbence

A first child, a son, Christopher Wayne, was born to Capt. and Mrs. Wayne Kellenbence of Apple Valley, Calif., Aug. 22. Birth weight was nine pounds, six ounces.

Mrs. Kellenbence is the former Mary Jane Van Valkenburg, daughter of Mrs. L. MacLeay of Tucson, Ariz. and G. Van Valkenburg of California. Mr. Kellenbence, son of Mr. and Mrs. Henry C. Kellenbence of 5 Marion Court, is in the United States Air Force.

Christopher M. Smith

A first child, a son, Christopher Michael, was born to Dr. and Mrs. Brian Smith of Millington, Tenn. at the United States Naval Hospital, Memphis, Tenn. Birth weight was nine pounds, seven ounces.

Mrs. Smith is the former Barbara Hodgdon, daughter of Mrs. Susan Hodgdon of 83 Roosevelt St. Dr. Smith, son of Mr. and Mrs. Joseph T. Smith of 67 High St., is a lieutenant in the United States Navy, assigned to the U.S. Naval Hospital in Memphis. Great grandmother is Mrs. Julia Fusaro Gabriele.

FAMOUS DESIGNER



BRIDAL GOWNS

GREAT SAVINGS ON SAMPLE
BRIDAL GOWNS FOR
ALL SEASONS
Gowns for All Occasions
Gowns for The Entire
Wedding Party

APPOINTMENTS SUGGESTED
HEIRLOOM BRIDALS
1007 BROAD ST., BLOOMFIELD
Bridalists Area Near Shopping Area,
Just 151 North State Parkway, Next to
Terry Drugs. Plenty of Free Parking in Rear.
Phone (201) 429-7772

Mr. and Mrs. Jeffrey D. Halpern Honeymooned in the Caribbean

Wedding vows were exchanged July 2 by Lorraine E. Dixon, daughter of Mr. and Mrs. William K. Dixon of 17 Arthur St. and Jeffrey David Halpern, son of Mr. and Mrs. Howard P. Halpern of Verona.

The Rev. Fred Hoffman performed the ceremony at Vincent United Methodist Church, Nutley. A second ceremony was performed by the rabbi of the chapel of Richfield Regency, Verona, where the reception was held.

Given in marriage by her father, the bride wore a white chiffon gown with a Queen Ann neckline, bishop sleeves and full cathedral train. Venice lace appliques and seed pearls decorated the bodice and train and she wore a fingertip mantilla veil of tulle, pearls and lace. She carried white roses, stephanotis and miniature white carnations.

Diane J. Dixon of Belleville was her sister's maid of honor. Bridesmaids included the groom's sister, Deborah Halpern of Colorado, Jean Accardi of Garfield and Catherine Tattoli of Belleville who was soloist at the ceremony.

They were attired in lavender taffeta gowns ruffled at the neckline and carried pale pink roses, white carnations, lavender flowers and babies breath.

Kenneth P. Halpern of Verona was his brother's best man. Ushjs were the bride's brother, Keith W. Dixon of Belleville, Michael Hartl of Belleville and Ronald Accardi of Garfield.

Mrs. Dixon chose a pale mint green gown with chiffon cape. Her wristlet was of orchids. The groom's mother, in a light blue gown with lace inserts, had a wristlet of white miniature carnations.

Mrs. Halpern attends Douglass College, Rutgers University, New Brunswick.

Mr. Halpern, an alumnus of Montclair State College, manages the family business, Towne Delicatessen and Caterers, Belleville.

The couple have made their home in Roselle Park following a honeymoon in St. Maarten in the Caribbean.

Anna M. Falsetti Honored at Party

A 65th birthday party in honor of Anna May Falsetti was celebrated Aug. 27 at Beppy's Restaurant, Newark. The affair for 200 guests was hosted by her fiancé, Nick De Luca of Orange. An honored guest was Ms. Falsetti's brother Ed from Seattle, Wash.

Flea Market September 17

The Belleville Reformed Church located on Main and Rutgers streets, will hold an outdoor flea market and cake sale, Saturday, Sept. 17 from 10 a.m. to 4 p.m. in the church parking lot. Refreshments will be available. For more information call 759-2207.



Mr. and Mrs. Jeffrey Halpern — nee Lorraine Dixon

Belleville Class of 1973 Plans Reunion

The Belleville High School Class of 1973 will hold its 10 year reunion Nov. 18 at the Meadowlands Hilton.

Addresses of many former

classmates are still needed so that they may receive reunion details. For further information, the following numbers may be called: 751-0898, 893-9528, 759-4568 or 759-7092.

Daniels W RLD of DANCE & GYMNASTICS

OUR 10th YEAR!

BEGINNER • INTERMEDIATE • ADVANCED
AGE 3 AND UP

NEW! MORE and 'SPROUT' CLASS - 10 months 2-yr

WINNERS!
1981-82-83
COMPETITIONS
DANCE EDUCATORS
OF AMERICA, N.Y.C.
TALENT
SYMPOSIUM
CHERRY HILL, NJ

FALL REGISTRATION

TUES. • WED. • THUR. • AUG. 30 thru SEPT. 8th
10AM to 6PM

CLASSES BEGIN SEPT. 10th

PLEASE
REGISTER
EARLY

DANCE
• BALLET • TAP
• POINTE • JAZZ

CHILDREN'S MUSICAL
THEATER WORKSHOP
AGE 8-12 YEARS

STUDENT/TEACHER RATIO 8:1
ALL COURSES ARE GRADED
ACCORDING TO AGE
AND ABILITY!

GYMNASTICS
BOYS & GIRLS • NOVICE thru AERIAL
• UNEVEN PARALLEL BARS
• BALANCE BEAM
• VAULTING
• FLOOR EXERCISE
• FLYING RINGS
• MINI-TRAMPOLINE



229 FRANKLIN AVE., NUTLEY CENTER

FOR INFORMATION & BROCHURE CALL

661-0855 OR 661-0821

Anniversary Special

Save

\$50.00

\$129.95

Full

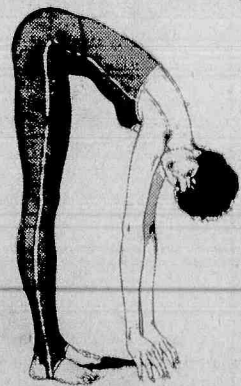
Membership

Off Of Regular Price

Membership Includes

- Group Aerobic Classes
- Individualized Programs
- Complete Figure Analysis
- Nutritional Guide & Assistance
- Professional Supervision
- Schedule Weight Checks & Measurements
- Beauty & Skin Care Clinics
- Guest Programs Available
- Individual Diets

10% Off For All Senior Citizens
(60 years & older)



Ask About
Group Discounts

Rosanna's Figure Salon

117 Bloomfield Ave. 743-9687

Rickel's Shopping Center, Bloomfield, N.J.



Seems Like Only Yesterday...

Belleville Skating Arena Destroyed During Blaze

Thirty Years Ago
Increased enrollment in Belleville

Board Certified Dermatologist
Fellow of The American Academy of Dermatology
Consultant, N.J. Dept. of Health

DOMINICK J. LIGRESTI, M.D.

Has Opened His Practice in
DERMATOLOGY

Disorders of Skin, Hair & Nails
Including:

- Skin Cancer Surgery & Prevention
- Collagen Implants for Acne Scars and Wrinkles
- Removal of Moles & Warts
- Venereal Diseases, Herpes
- Varicose-Face & Leg Veins
- Hair Transplants

Clara Maass Professional Center West

50 Newark Avenue-Suite 104
Belleville, N.J. 07109

Hours By Appointment
759-6569

schools exceeded even the worst fears of School Superintendent Evan H. Thomas, who announced there is a serious overcrowding problem at School 7. An increase of 102 children has ballooned School 7's enrollment figure to 641. According to a Columbia survey three years ago, the school should house 480 students at the most. The prospects of this enrollment figure increasing over the next few months is very high, due to occupancy of new houses in the vicinity. Only half of a 98-house development in the school district are completed. Officials are predicting 30 to 40 new students by December. It is expected that Thomas will make several recommendations to the School Board to deal with the situation.

Twenty-five Years Ago

The School Board announced it would bring a second referendum soon to the people of Belleville for the construction of a new high school on town-owned land located west of the municipal stadium. If approved during the special election, the Town Fathers will hand over the deed to the property to the Board of Education. There will be two questions asked to voters: "Do you approve of the site for the new high school," and "Do you approve of the money for the construction of the school?"

One person who disapproved of the site was Commissioner Elmer S. Hyde. "You may as well put the school in Nutley, if it is going to be in the stadium area," he said. "Nutley is only three blocks away."

Rev. Titian P. Menegus, pastor of St. Anthony's Church announced the dedication of the new parochial school, along with Rev. Thomas

Boland. The school, located on a three and one half acre tract at 25 North Street, will be administered by Sister Fillippini. The ceremonies included the laying of the cornerstone, a school blessing and a solemn benediction.

Twenty Years Ago

Fire and police officials sifted through the charred ruins of the famed Belleville Skating Rink located at 701 Washington Ave. A fire razed through the roller rink causing \$300,000 in damage and injuring 11 firemen and one police officer slightly. The owner, William Mishkind, had just completed redecorating the inside of the building and had scheduled a reopening date of Sept. 24. The building had been closed for five months. It took two hours and fire fighters from three communities to control the blaze. Every available fireman and police officers were called to the scene, along with back up help from Nutley and Newark. "It would have been impossible for us to control the blaze with our equipment alone," said Fire Chief Carl Hundertpfund. "Nutley did a heck-of-a job for us. Their light truck stayed until midnight to watch things."

One Year Ago

The School Board voted 5-2 to appoint another vice principal to the senior high school. Marilyn McGarth, became the third vice principal at Belleville High School, and the first woman administrator at the high school. An English teacher at the high school for nine years, she won the post out of 14 candidates from within and without of the system who applied for the position.

The Belleville Zoning Board voted 6-1 to allow the construction of six attached one-family townhouses at 416 Joralemon St. But the board also decided that township Code Enforcement Officer Robert Domenick, who is a corporate member of the applicant, withdraw his name from the case. Many residents in the area were upset with the board for allowing the townhouses to be constructed in their neighborhood, while others were concerned that Domenick's involvement was a conflict of interest.

Man Fined For Assault On 2 Women

A Bloomfield man was fined \$200 for assaulting two women by Belleville Municipal Court Judge Edward Abromson last week.

Julio Cruz of Weaver Avenue was found guilty of punching two women in the face, causing one to lose three teeth, during a fight on April 6.

A Belleville man was found guilty of assault and fined \$200 during a court case this week.

Thomas Thorpe of Little Street was fined by Judge Abromson for striking another man in the face during a fight on Aug. 26.

A Paterson man was found guilty of choking a woman and fined \$350.

Robert Wendler of Verron Street was also placed on one-year probation for choking a woman during an argument on July 6.

A Belleville man, accused of starting a fire, had his case referred to the Grand Jury this week.

The Eugene Place man was arrested and accused of causing an explosion at 38 Eugene Place on Sept. 3. The man is accused of pouring gasoline in the basement of the house and then starting the fire.

A Belleville man was found guilty of possessing five hypodermic needles and fined \$475.

Kenneth Kraus of Overlook Avenue was also found guilty of operating a motor vehicle without the consent of the owner and was placed on one-year probation.

HEALTH WISE



By Ralph J. DiMaio D.C.

In a normal healthy body, structural balance is expected. Any deviation from symmetrical balance, such as non-level shoulders or a head that tilts to one side, reveals an imbalanced nerve energy pattern.

If left uncorrected, the condition that causes the structural imbalance may also cause headaches, backaches, leg aches, fatigue, asthmatic wheezing or other symptoms. The impairment of nerve energy supply that weakens muscles can also deprive vital organs of their ability to function normally.

Periodic chiropractic examinations are aimed at preventing poor health. Make an appointment by phoning our office.

DR. RALPH J. DI MAIO
Chiropractor
825 Joralemon St. Belleville 751-8805



DIETS MADE TO ORDER

Expert Nutrition Counseling By Experienced
Registered Dietitian Nutritionist

19 YEARS EXPERIENCE

Medically Approved For:

- Weight Control
- Sports Nutrition
- Pregnancy
- Allergies
- Preventive Nutrition Children & Adults
- G-I Disorders
- Cancer
- High Blood Pressure
- Diabetes
- After Surgery
- Heart Disease
- Other Health Problems

No Special Foods - No Pills

Personalized Diet Plan Compatible With Life Style

Low Cost - Private Counseling-House Calls Made

Promote Better Health and Fitness Through Good Nutrition

Special: Complete Nutrition Evaluation \$40.00

By Appt. Only

MARY ANN ZIMMERMANN, M.A., R.D., Nutritionist
6 Pompton Ave., Cedar Grove 239-5663

CAMEO OPTICS GREAT EYEGLASS GIVEAWAY

STOP IN FOR A FREE CAMEO OPTICS "BUY 1 PAIR - GET 1 PAIR FREE" BUMPER STICKER AND WIN A "100 CERTIFICATE"

EACH WEEK BEGINNING SEPTEMBER 20th, A CAR WILL BE SPOTTED DISPLAYING OUR BUMPER STICKER AND THE PLATE NUMBER WILL BE PUBLISHED IN OUR ADS AND DISPLAYED AT OUR STORE. THE LUCKY WINNERS WILL RECEIVE A "100" CERTIFICATE TO BE USED TOWARDS EYEGLASS PURCHASES IN OUR STORE

BUY ONE
PAIR

GET ONE
FREE

CAMEO OPTICS

BELLEVILLE 751-4600 NEW JERSEY

WINNING CERTIFICATES MUST BE CLAIMED DURING THE WEEK PUBLISHED, AND USED WITHIN 30 DAYS. NO CASH GIVEN OR REFUNDED. CERTIFICATE NEED NOT BE USED BY WINNER AND MAY BE PASSED ON TO ANOTHER

TWO FOR ONE EYEGLASS CENTER

BUY ONE PAIR
GET ONE FREE

BUY ANY COMPLETE PAIR OF EYEGLASSES IN OUR STORE AND RECEIVE A SECOND-PAIR ABSOLUTELY FREE!

HUNDREDS OF FRAMES TO CHOOSE FROM INCLUDING DESIGNERS, METALS & RIMLESS. WE ASK ONLY THAT BOTH PAIRS BE FOR THE SAME PERSON.



CONTACT
LENSES
AVAILABLE

CAMEO OPTICS

GRAND UNION SHOPPING CENTER • BELLEVILLE

751-4600

Spencer's Dynamic Duo.

...Earn Money Market Rates with Insured Safety and Availability!

Pick one or both!

Investment Money Market Account



Super Now Checking Account

Earn Insured Guaranteed High Money Market Rates with your money safe at hand and always available!

- Low \$2,500 Minimum Balance
- Insured to \$100,000 by the FSLIC
- Guaranteed Rates based upon current money market yields
- Deposit or Withdraw any amount
- Enjoy limited or unlimited Checking Privileges
- Receive a convenient Monthly Statement

• Plus Many Other Features

Make a safe, smart and solid investment now!
Get further details at any office.

OTHER HIGH-EARNING SAVINGS PLANS ALSO AVAILABLE.

Spencer Savings
and Loan Association

GARFIELD • LODI • WALLINGTON • SADDLE BROOK • CLIFTON • LYNDHURST • BELLEVILLE

PHONE NUMBER FOR ALL OFFICES • 772-6700

Your Savings Insured to \$100,000

Member FSLIC

WHITE OAKS LIQUOR SHOPPE

418 Union Ave., Belleville
Mon.-Sat. 9-10 Sun. 12-5 759-3777 or 759-3775

Carlo Rossi
Paisano or
Chianti
\$4⁹⁹

Cutty Sark
Scotch
\$17⁹⁹

Schlönly
Reserve
\$9⁹⁹

King William
Scotch
\$11⁹⁹

Bacardi
Light Rum
\$11⁹⁹

Beefeater
Gin
\$17⁹⁹

Smirnoff
Vodka
\$10⁹⁹

Amaretto
di Sarnno
\$11⁹⁹

Yukon
Jack
\$7⁹⁹

Southern
Comfort
\$7⁹⁹

Andre
Champagne
\$5⁹⁹

Christian Bros.
Chablis or
Burgundy
\$3⁹⁹

Porto
Palo
\$2⁹⁹

Cherry
Kijata
\$3⁹⁹

Tosca
Scauor
Valpolicella
\$1⁹⁹

Almaden
Rhine or Sauterne
\$5⁹⁹

Gallo
Chablis Blanc
\$5⁹⁹

Tuborg
Cans
\$3⁹⁹

Schaefer
Beer or Light
\$8⁹⁹

Almaden
Burgundy or Rose
\$5⁹⁹

C.K.
Fortisalmo
\$7⁹⁹

LIQUOR
COUPON

WINE
COUPON

10% OFF

Any Case of
Beer

(Excludes Sale Items)
Expires Sept. 20, 1983

10% OFF

All Liquor

(Excludes Sale Items)
Expires Sept. 20, 1983

10% OFF

All Wine

(Excludes Sale Items)
Expires Sept. 20, 1983

Not Responsible For
Typographical Errors

Cash & Carry On Sale Items
Prices effective thru 9/17/83
MANY UNADVERTISED SPECIALS

We Reserve The
Right To Limit
Quantities

Grand Union is changing.

Once in a while, a company will make an important change which is in its own interest and which also becomes a great benefit to the people of the community.

We have been considered a somewhat high priced store. We don't want to be considered that. We will be completely competitive to the lowest price supermarket chain in your community.

We are matching the regular prices of the lowest supermarket chain in your community, which is Pathmark. This is not a price war, but we will match Pathmark no matter how low it goes. And that is a permanent change.

We felt that many may not believe this. "Just another promotion" is what they'll think. (Of course, we'll still have our Red Dot Weekly Specials—even more of them.)

But this they can believe.

We will publish, every week, for every store, over 9,000 regular prices in a booklet called the Grand Union Consumer Price Finder. It will be free to all to take home, to use in shopping at any supermarket, to help shoppers shop intelligently. It will be printed weekly with updated prices, and organized for easy use.

We believe it will be of enormous benefit to you, and we hope it will help us as well.

Come to Grand Union for your free Price Finder. You don't have to buy a thing to get it. But if you do, you'll like our lower prices.

Grand Union Consumer Price Finder

Contains over 9,000 regular prices
for your shopping comparison.

As of J

Grand Union matches
of the lowest leading
supermarket in your comm

Grand Union Red Dot weekly specials
are even lower than the
regular prices in this book.

Do not compare these regular prices
with weekly specials of any supermarket.

You won't find Red Dot Specials in our Price Finder Booklet. But you'll find 300 of them in the store.

HERE ARE JUST A FEW:

Chilled
**Grand Union
Orange Juice**
Half Gal. Cont. **89¢**

Gov't. Grade 'A' - 2 1/2 - 3 Lbs.
**Perdue Fresh
Whole Chickens**
Split or Quartered Lb. **59¢**
49¢ Lb.

Super RED DOT Coupon
Grand Union - White
**Fresh Large
Grade 'A' Eggs**
One Dozen Carton **59¢**
With This Coupon And Purchase Of \$7.50 Or More. Coupon Good Sept. 11 Thru Sept. 17. Limit one coupon per customer.

California
**Fresh Tender
Broccoli**
Bunch **69¢**

**Buy One
Get One FREE!**
One 1-Lb. Pkg. - Assorted Varieties
**De Laurentiis
Imported Pasta**
When you purchase one 1-lb. pkg.
De Laurentiis Pasta at our regular low price.

Super RED DOT Coupon
Original or Caffeine Free
**Coca-Cola 6-Pack
or Diet Coke or Tab**
12-oz. Cans **99¢**
With This Coupon And Purchase Of \$7.50 Or More. Coupon Good Sept. 11 Thru Sept. 17. Limit one coupon per customer.

All Method Grind
**Chock Full
O' Nuts Coffee**
1-Lb. Can **189¢**

U.S.D.A Choice - Boneless Beef
**Top Round for
London Broil**
Lb. **177¢**

Super RED DOT Coupon
Quarters
**Blue Bonnet
Margarine**
3 1-Lb. Pkgs. **100¢**
With This Coupon And Purchase Of \$7.50 Or More. Coupon Good Sept. 11 Thru Sept. 17. Limit one coupon per customer.

BUTCHER BLOCK

Freshly Ground Beef Ground Chuck In Pkgs. of 3-Lbs. or More. Ea. Lb. 137¢	Genuine Fresh American Shoulder Lamb Chops Blade Bone Lb. 187¢
Chicken Legs Perdue Grade 'A' Fresh - Whole with Thighs Lb. 89¢	Rostock Bacon Sliced 1-Lb. Pkg. 137¢
Chicken Breast Quarters with wings or Leg Qtrs. w. backs Perdue - Grade 'A' Fresh Lb. 67¢	Yankees Franks Regular or Beef 1-Lb. Pkg. 149¢
Top Round Roast U.S.D.A. Choice - Boneless Beef 4.5 Lbs. Lb. 187¢	Hot Dogs Armour Regular 1-Lb. Pkg. 97¢
Round Cubed U.S.D.A. Choice - Boneless Beef Steak Lb. 227¢	Continental Ham Sliced - Domestic 1-Lb. Pkg. 289¢
Ground Round Freshly Ground Beef Lb. 197¢	Available in Most Stores FRESH FISH
Smoked Picnic Pork Shoulder - Water Added Lb. 87¢	Shrimp Saltwater 50 to 60 Count Per Pound Lb. 589¢
Turkey Ham Land O Frost - Water Added Lb. 159¢	Pollock Fillet Fresh Atlantic Lb. 189¢
Corned Beef Freirich Brisket - Thin Cut Lb. 197¢	Fresh Cod Steak New England Lb. 199¢

Family Pack Savings

Cubed Chuck U.S.D.A. Choice - Boneless Beef Steak Ea. Lb. **187¢**

Chuck for Stew U.S.D.A. Choice - Boneless Beef Cubes Ea. Lb. **177¢**

Chicken Holly Farms Combo Grade 'A' Fresh 3 breasts split w/ribs, 3 drums, 3 thighs Ea. Lb. **119¢**

Chicken Legs Holly Farms Grade 'A' Fresh - Whole with Thighs Ea. Lb. **79¢**

Wholesale Savings

Grand Union offers a variety of money saving wholesale cuts...large sections of meat which we cut to your order. Enjoy part now...freeze the rest.

Fillet Mignon Whole U.S.D.A. Choice - Boneless Beef Tenderloin Lb. 5.7 Lbs. Untrimmed. Cry-O-Vac. Custom cut. **397¢**

Whole Pork Loin Fresh Western Grain Fed - Untrimmed 12 to 16 Lbs. Custom cut. **147¢**

Top Round Whole U.S.D.A. Choice - Boneless Beef 16-22 Lbs. Lb. Untrimmed. Cry-O-Vac. Custom cut. **167¢**

GROCERIES

Super Moist - Assorted Varieties Betty Crocker Cake Mix 1-Lb. 2-oz. Pkg. 59¢	Tetley Tea Bags Sliced Pkg. of 100 159¢
Chunk Style - In Oil or Water Bumble Bee Light Tuna 6 1/2-oz. Can 69¢	Skippy Peanut Butter Creamy or Chunky 1-Lb., 2-oz. Jar 129¢
Chocolate Chip Cookies Sunshine Chip-A-Roos 12-oz. Pkg. 99¢	Potato Chips Grand Union - Regular or Rippled 7-oz. Pkg. 69¢
	Viva Towels Colors, Decorator or Designer 90 Sheet Roll 69¢
	Mac. & Cheese Kraft - Dinner 7 1/2-oz. Pkgs. 89¢
	3-Way Bulbs General Electric 30-100 Each 129¢
	3-Way Bulbs General Electric 50-150 Each 99¢
	Dog Food Kal Kan Chunky Beef Dinner 14-oz. Cans 79¢

GROCERIES

Asparagus Spears LeSueur - Whole 1-Lb., 3-oz. Can 239¢	Maxwell House Coffee - Reg., ADC or Elec. Perk 2-Lb. Can 399¢
Heinz Ketchup America's Favorite 2-Lb. Btl. 119¢	Grape Nuts Post - Cereal 1-Lb. Pkg. 145¢
Sardines Maine Port Clyde 3 1/2-oz. Cans 89¢	Apple Snacks Weight Watchers - or Fruit Snacks 5-oz. Pkgs. 100¢
Uncle Ben's Rice Converted 5-Lb. Bag 299¢	Honey Aunt Sue's Raw 1-Lb. Jar 149¢
Tastykake Cakes Assorted Varieties 8-oz. to 12 1/2-oz. Pkgs. 139¢	Thomas' Muffins English - Original 6 Pack 12-oz. Pkg. 99¢
Dog Treats Jerky - Beef or Chicken 1-oz. Pkg. 39¢	2000 Flushes Bowl Cleaner 14-oz. Btl. 179¢
Glad Trash Bags Shear Strength Pkg. of 40 449¢	Brillo Scrubber Nylon Pkg. of 1 29¢
SOS Soap Pads For Scouring Pkg. of 18 85¢	Ammonia Parson's Lemon or Clear 1-Pt., 12-oz. Btl. 45¢

FRUITS AND VEGETABLES

Large 6 Size Golden Ripe Honeydew Melons Ea. 99¢	U.S. No. 1 - California Fresh Crisp Iceberg Lettuce Head 49¢
Peaches Jersey - Fresh Lb. 29¢	Pineapples Hawaiian Jet Fresh - Large 5 Size Each 299¢
Bartlett Pears Northwestern - Fresh and Juicy Lb. 39¢	Fresh Avocados Florida - Large Size Each 69¢
Yellow Onions U.S. No. 1 2-Lb. Bag 69¢	Squash Fresh Green - 'Zucchini' Lb. 39¢
Russett Potatoes U.S. No. 1 - Large Bakers 5-Lb. Bag 99¢	Italian Peppers Fresh - For Salads or Frying Lb. 39¢
Fresh Eggplant Firm Lb. 29¢	Radishes Crisp - Red 6-oz. Cello Pkgs. 59¢
Fresh Cabbage Green Lb. 17¢	Spanish Onions U.S. No. 1 - Large Size Lb. 39¢

THE BIG FREEZER

Bright & Early Imitation Orange Juice 6-oz. Cans **49¢**

Pizza Tree Tavern Cheese - Snack Size 10-oz. Pkg. **99¢**

Le Menu Chopped Sirloin Beef Dinner or Turkey Breast, Sw. & Sour Chick. 11.25-oz. Pkg. **269¢**

Chicken A-la-King Le Menu - or Breast of Chick. Parm. 10.25-oz. Pkg. **219¢**

Mrs. Smith's Pie Boston Cream 1-Lb., 3-oz. Pkg. **169¢**

DATE-LINE DAIRY

Sour Cream Sealtest 1-Pt. Cont. **89¢**

Grapefruit Juice Minute Maid - Chilled Half Gal. Cont. **169¢**

Whipped Cream Grand Union - Instant 7-oz. Cont. **89¢**

Cheddar Land O Lakes 1 Qt. Cheese Colored - Reg. or Ex. Sharp Chunk 8-oz. Pkg. **189¢**

Horseradish Gold's - Red or White 4-oz. Jar **49¢**

CORNER DELI

Cooked Ham Deli Sliced - Water Added Half Lb. **99¢**

Hard Salami Armour - Deli Sliced Half Lb. **169¢**

Chicken Roll Weaver's - Deli Sliced Half Lb. **119¢**

Cole Slaw Made with Hellmann's Mayonnaise 2 Lbs. **99¢**

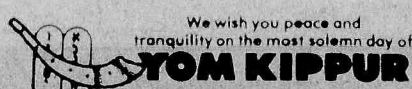
HEALTH & BEAUTY

Afrin Spray Nasal Spray 15cc-Cont. **249¢**

Polident Bonus Pack 8 FREE Denture Cleanser Tablets Pkg. of 48 **179¢**

New Freedom Maxi Thin Pads Pkg. of 30 **359¢**

Speed Stick Mennen Anti Perspirant Deodorant 2.5-oz. Pkg. **199¢**



GRAND UNION

MOST GRAND UNIONS ARE
OPEN 24 HOURS
Check your local Grand Union for store hours.

Prices effective Sunday, Sept. 11 thru Saturday, Sept. 17 at all Grand Union stores in New Jersey, Rockland and Orange Counties. In order to assure a sufficient quantity of sale items for all our customers we reserve the right to limit sales to 3 packages of any item unless otherwise noted. Not responsible for typographical errors. For store information call our office in Paramus (201) 262-9200.

Religious Viewpoint

By Rev. Robert Paul

How Captain John Coutts Got Peace

In mid ocean a wild, swearing tyrant of a sea captain lay on his back in his cabin, death staring him in the face. He winched in the presence of the king of terrors, and fear of the beyond took fast hold upon him. He sent for his first officer, "Williams," he said, "kneel down and pray for a fellow, I'm awfully bad. I expect I'll go this time."

"I'm not a praying man, Captain, you know, I can't pray."

"Well bring your Bible and read me a bit, for my rope's run out."

"I've got no Bible, Captain, you know well, I'm not a religious man," said Williams.

"Send the second officer here, then," said the Captain, "perhaps he can pray a bit."

In a few moments the second officer stood by his bedside. "I say, Thomas," said the Captain, "I'm afraid I'm bound for eternity this trip; get down and pray for me, man; ask God to have mercy on me."

"I'd do it to oblige you, Captain, if I could," said the second officer, "but I can't. Since I was a lad, I've never prayed."

At last a man informed the Captain that he had seen a book like a Bible in the hands of the cook's boy, Willie Platt. "Sit down there and find out something in it that will help me now. I'm going to die." Willie turned to Isaiah 53, and read; "He was wounded for our transgressions; He was bruised for our iniquities; the chastisement of our peace was upon Him; and with His stripes we are healed."

"Boy, put your Captain's name in, John Coutts."

"He was wounded for John Coutts' transgressions; He was bruised for John Coutts' iniquities; the chastisement of John Coutts' peace was upon Him; and with His stripes, John Coutts is healed." Over and over again he repeated the glorious words of Isaiah 53:5, putting his name in, and as he did so, the joys of heaven filled the new-born soul. Another poor sinner for whom Christ died had received Him (John 1:12).

A Zoo Visit



Petting The Snake — The Belleville Public Library was the scene of a program offered by Turtle Back Zoo recently. A representative of the zoo both animals over for the children to look at.



What Is It? — This young man is more than curious about the hedge hog brought to the Belleville Public Library by Turtle Back Zoo.

White Eagle Manor

A Wedding to Remember

WEDDINGS

SERVED INDIVIDUALLY
OR FAMILY STYLE
CHAMPAGNE TOAST &
WEDDING CAKE
INCLUDED
3 HOUR UNLIMITED BAR

Facilities from
50-400 people

Ample Parking
Buffet Office &
Cocktail Parties

Live Entertainment Weekends

41 Broughton Ave. Bloomfield

748-6590

1882-1983 101ST ANNIVERSARY YEAR

ODORLESS METHOD
OF ELIMINATING



FLEAS

BROUGHT HOME BY
YOUR DOG OR CAT

Fleas are more than a nuisance; they can infect your loved ones. Flea bites may produce small red spots that itch. They are also carriers of disease. The Bliss odorless method is guaranteed to completely eliminate fleas. It is a guarantee backed by our 101 year reputation for reliability.

PHONE TODAY

676-8888

BLISS

ESTABLISHED 1882

TERMITE CONTROL

ONE OF THE OLDEST AND LARGEST



Security,
Beauty,
Savings.
Decorative
ENTRANCE
DOORS

**35%
OFF**
Factory
List
Doors &
Windows



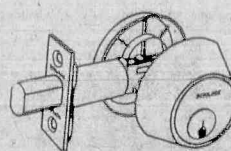
Also Complete Line of Wood,
Aluminum & Steel Garage
Doors

Up to 15% Energy Credit
Aluminum & Vinyl

Replacement

WINDOWS

Energy Savings
Maintenance Free
Custom Made
Call 743-8603



Free deadbolt
lock with any
door purchase

SCHLAGE
Part of worldwide Ingersoll-Rand

Free shop at home or visit our showroom
Essex Replacement Door & Window Co.
419 Broad St. Bloomfield

Hours: Open Daily 10-6
Tues. & Thurs. till 9



Your family could win
a free trip to
**WALT DISNEY WORLD
EPCOT Center!**



Enter Kodak's

**Family
Spirit
SWEEPSTAKES**

Just visit our studio or call for a home appointment to get your entry blank. It could win your family a free trip to EPCOT Center in Florida as well as make you eligible for one of hundreds of other exciting sweepstakes prizes. No purchase necessary. Sweepstakes ends September 30, 1983.

While you are in our studio, ask for your free copy of "Family Portraits Express What it Means to be Together" and let us show you how you can capture your family spirit in a handsome family portrait. What better way to say love?

Wonderland Studio

PHOTOGRAPHY

666 Franklin Ave., Nutley 667-3683



Senior Citizens Get Reduced Movie Rate

Movies for senior citizens at the Verona Theater have resumed for the fall and winter season. Tickets are 75 cents for the 1 p.m. showing on one Thursday in the month.

This month's showing will be on Sept. 16 and the picture is "Zelig" with Woody Allen and Mia Farrow, rated PG.

Dr. Michael Festa is supporting this project aided by Louis DeMaio. The special showing and rate are for senior citizens only.

You've heard us on WCBS
and WINS Radio

5 minutes
via
Rte. 21
Belleville/
Nutley
YOU can get
the great
deals on

**HONDA
PONTIAC
or VOLVO**

that have brought hundreds
of people from ALL OVER
the Tri-State area.

**City
Motors**

River Drive, at Rte. 21, Passaic Park
777-1600

ORECHIO'S NUTLEY MANOR RISTORANTE

667-8899

You're Invited to Orechio's New Nutley Manor

CONTINUING
EARLY BIRD SPECIAL PRICING
"20% OFF ENTREE PRICES"

Come and enjoy the Manor's great meal selection during the early evening and get 20% off the entree price.

(Must be seated between 5 P.M. and 6:30 P.M. Early bird discount does not apply to other specials or discounts.)

HAPPY-
HAPPY
HOURS

5-7 p.m.
Monday thru Friday

FREE

\$1.00

House Brand
Drinks At
The Bar

— Hot Hors D'Oeuvres
— Cheese Boards

**Happy Birthday
To You**

Celebrate your birthday, or a loved one's birthday at dinner, and the Manor will provide a free birthday cake for your celebration. Also, the birthday baby gets a bottle of wine, compliments of the Manor.

(Advance Notice Please)

(Minimum Party of 4)

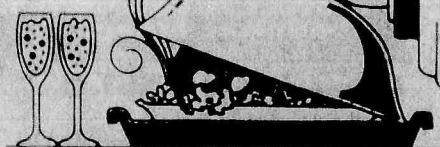
**Wednesday Nites
8 till Closing**

LADIES ARE SPECIAL!

\$1.00

House Drinks
At The Bar

dine
with
us!



— BACK BY POPULAR DEMAND —
ENTERTAINMENT WEEKENDS
BY "EDDIE BRICK and SPIRIT"

A Luncheon
Treat
Monday thru Friday

\$5.95

Italian Buffet Feast

**Anniversary
Celebration?**

When you come to the Manor to celebrate your anniversary, let our hostess know so we can celebrate for you with a complimentary bottle of champagne. Cheers!

(Minimum Party of 4)

800 Bloomfield Ave., Nutley,
Across from Hoffmann-La Roche

Belleville Times SPORTS

Looking At Younger Players

Senesky Preparing Team For Opener With Nutley

When someone asked Belleville football coach John Senesky if his team was ready for the Super Bowl, the coach laughed a little and replied, "Not quite."

If you were to ask Senesky if his team was ready for the beginning of the regular season with Nutley on Sept. 24, he would probably tell you that there's a lot of work to do, but you can't help to back up the calendar. So, the season will open in nine days and ready or not, here it comes.

The Bucs had their first taste of live competition when they battled Westfield High last week and Senesky came away satisfied with the first test. "For this first time out,

it wasn't bad," said the coach. "There is some inexperience in the line and we're looking for depth. Some of the players will probably play both ways, but right now, we're looking to see what our younger players can do so we don't have to play the kids both ways, especially in the early part of the season when it's so hot."

Last Tuesday, the Bucs battled Morris Knolls and this Saturday will be in Bayley Ellard for their final tuneup before the Nutley contest. The coach is looking to put players in the right positions and has the luxury of returning lettermen, something that has been lacking in recent years.

Not since the 1979 season has Belleville had so many returning players. Last years graduation took just 15 seniors from the squad, as compared to the 25 seniors that left following the 1981 season. The names are familiar, but Senesky warns, there are a lot of kids out for the team and competition should be strong for starting positions.

On the line, Ralph De Falco and Bob Mozeika have been impressive. Dave Mozeika should be strong at tight end. He is an excellent blocker and has good hands. The quarterback situation is tight right now, although it does not resemble the Giants problems from last summer. Mark Walsh and Frank Zangari are vying for the position. Both men saw little varsity action in 1982 mainly because John Borrello ran the show. However in the playoff game with Union, Borrello went down with a shoulder separation and Walsh filled in very well, leading the Bucs to their only touchdown of the game.

Zangari has looked good in practices and will be a top candidate. He saw some action on the varsity level in 82 but does not have much experience.

In the backfield, there is the mammoth Mike Murphy, at 6-2, 240 pounds. He's some 20 pounds heavier than last year when he rushed for over 1,000 yards. Murphy worked hard during the off season and appears in outstanding shape. While everyone in town knows of his talent, the other ball clubs should also be aware of his talent. That's where Billy Baber and Frank Tursi should step in.

Defensively, there is Mike Gibbons at nose guard, Steve Tribuna at nose tackle, Steve Kimble at defensive end, John Apicella and Anthony Gizzo at rover back.

"There are a lot of kids," said Senesky. "I don't want to miss anyone now, but as the season goes on, we'll have a better idea of who will be playing. Right now, we're looking for depth and improvement of our execution. At this point of the season, the defense is ahead of the offense. The offense is more timing and precision while defense is more hitting and just all out playing."



Getting Ready — Buccaneer football coach John Senesky works with his offensive backfield players, during a practice at Municipal Stadium earlier this week. Senesky is preparing the team for its season opener against Nutley in two weeks.

Heavy Schedule Awaits Young BHS Tennis Squad

The Belleville tennis team opened up its 1983 season last Monday with a home match against Fair Lawn. The squad will play 10 matches in the next few school days, an indication that the upcoming season will certainly test the true character of the team.

"We have a lot of matches this season," sighed head coach Karen Fuccello. "And with a young ball club, we'll have some big tests early in the season."

The girls are a young team, losing Kim Indiero, their number one player to graduation last season. At first singles this year will be junior

Sheri Tillman followed by Dina De Aquino at second singles and sophomore Desiree Johansen at third. Johansen will be challenged by Lori Tirrell and Janet Reiman, although those two will be playing doubles right now.

The second doubles squad could be Mary Kudrack and Laura Caruso. Claudia, Lara, Melissa Lane, Susan Ashauer and Angel Greco. Fuccello feels that those four players could work their way into the lineup by mid season.

The tennis team at Belleville High School has been very successful the last two years, posting marks of 12-7

in 1981 and 15-7 last year. The key to success lies in the first singles. This is the first year that a junior will be competing in the first slot in quite a while. Looking back, Indiero was the first singles player last year, Rosie Leonidis occupied the spot in 1981 and Carolann Salerno was the top girl in 1980. Tillman should be a strong entry for Belleville. She is a year round player, has shown rapid improvement since her freshman year and did a nice job last year in singles play. If Belleville can receive a strong performance from her, then

(Please see 'Coach' on page 12)

Senesky Remembers Last Year's Buc-Maroon Clash

Last week, John Senesky spoke of the big rivalry with the Nutley Maroon Raiders. "I think it's bigger now than when I played. The players know each other quite well and are very competitive. I'm looking for a big game."

Senesky was then asked if he liked the idea of playing Nutley on opening day. "No," said the coach quite candidly. "There's no way I would like to play them early because there is enough emotion on the line as it is. Both teams will be pumped up, no doubt. I have a lot of respect for their coach (Pete La Barbiera) and his staff. He has done a lot of good things with the team. He'll have them ready."

While it is true that La Barbiera will have his club ready, make no mistake the John Senesky will have his ball club ready. Since he took control of the Bucs back in 1977, Belleville has been a very well prepared club. In the rare games the team has lost since 1978, one thing has been true, Belleville is a team that comes to play and never is unprepared.

Part five of our series of great Belleville-Nutley games takes us back one year, to 1982. This is the final of the series with the opening game set for Sept. 24. It seems a good idea to highlight last year's battle and get ready for the big game this season.

Saturday, October 23, 1982, Belleville High School is the sight for a big contest between the rivals. Unlike past seasons when the two clubs played in the third game of the season, this is the fifth game of the campaign and a renewal of a rivalry that was seriously in jeopardy after the 1981 game. At that time, Nutley was accepted into the NNJIL conference and Belleville was still an independent. With the schedule format, Nutley did not have a free week and could not play Belleville. It appeared the two teams would no longer

play, something that would have greatly affected high school sports because the rivalry is so intense and such a natural.

Of course, a few months later, the state of New Jersey assigned Belleville to the NNJIL and the rivalry was saved. Now, on this sunny day in October, the two clubs get together and Nutley is sky high. The Raiders come in with a 3-1 mark, having disposed of Paterson Eastside, Bloomfield and Wayne Valley after losing to Montclair on opening day. The wins over Eastside and Wayne Valley were lopsided scores, with Nutley winning by shutouts and scoring over 40 points in both contests. They were riding a three-game winning streak and gunning for a major upset against the seventh-ranked team in New Jersey, Belleville High School.

For Belleville, the team was coming in after losing its first contest of the season, a 22-2 defeat at the hands of Montclair the previous week. Prior to that loss, Belleville had beaten Passaic Valley, 27-0 and Clifton 37-0. Sandwiched between those victories was that historic 3-2 win over Passaic. The newspapers had Belleville a big favorite and had them ranked as high as fourth in the state.

A crowd of over 4,000 showed up at BHS for the game. It was the first time in years that Nutley had such a strong ball club and the anticipation of a Raider win and a snap of the Belleville four-game winning streak against them was high. The game would be dictated by penalties, something not unusual in this rivalry, but the penalty situation was worse than normal.

On Nutley's first play from scrimmage, they were hit with a 15-yard holding penalty. All told, the Maroon was hit for 100 penalty yards while Belleville was nailed for 93 yards. The Bucs only touchdown of the contest came in the se-

cond quarter. Mike Murphy, who rushed for 173 yards on the day, took a handoff from John Borrello on the Buc 17, broke five tackles and ran 83 yards for the score.

"That was one of the best runs I've ever seen," Senesky would later say. "In fact, I'd venture to say it was one of the finest runs in school history."

BUC SHOTS

By Michael Lamberti

Sports Editor

The Bucs elected to go for two points and capitalized when Borrello hit Ray Kimble with a three-yard pass for the score.

For the Raiders, they were held to 89 yards total rushing on the day. Their only points came late in the first half when Bob Restaino booted a 26-yard field goal. The play culminated a five-play drive that was set up by a Nutley interception of a Borrello pass.

In the third quarter, Belleville started one of its patented chew up the clock and score drives. Following the kickoff, the Bucs started from their 25-yard line and, thanks to some bull-like running by Murphy and an occasional spurt by Robbie Cancelliere and Billy Baber, drove to the Raider 20-yard line. However, Jimmy Castelli as cited for blocking below the knees and shortly thereafter, Nutley took

over on downs.

The drive was important because it ate up a good portion of the third quarter clock. In the third quarter, Nutley was limited to only three downs.

In the third quarter, the Raiders started a big drive from their own 47. Thanks to a beautiful 20-yard run by Bob Paganelli, they drove as close as the 24-yard line, but Cancelliere made a beautiful tackle on Nick Petti on fourth down to give Belleville back the ball and wrap up the win.

Statistically, Belleville tallied 20 first downs to 19 by Nutley. Total yardage favored Belleville, 201-178 with the Bucs gaining the advantage in rushing, 188-135. The passing stats went to Nutley, 43-13.

Petti tallied 47 yards for Nutley on the ground and Paganelli, the Raiders top rusher in 1982 gained 86 in 13 carries. For Belleville, Murphy led the way with 173 yards and Cancelliere tallied 31 on eight carries. Passing wise, Borrello completed 7 of 14 passes, but they were good for just 13 yards. The game, as has been the trend in this series, featured tough defense, a lot of hitting and not a lot of offense. Belleville would go onto an 8-1 regular season and battle Union in the Group IV, Section II playoffs. For Nutley, the Maroon rebounded with a vengeance, bouncing Paterson Kennedy, Passaic Valley and Clifton while bowing to Passaic. Their final mark: 6-3, 5-3 in the NNJIL, good for fourth place in the conference. Belleville and Montclair ended up in a tie for first place with Passaic second with a 6-2 mark.

After five weeks of reading about Belleville-Nutley games of the past, it's time to get ready for a Belleville-Nutley game of the present. A lot of eyes will be planted at Nutley High School on the afternoon of September 24. There will be a lot of questions, too. For instance, can Nutley prove it can beat the state powers,

in this case Belleville? Can Murphy continue his torrid running against the Raider defense? Will the first break of the game be decisive? Will it be high scoring, will one touchdown be enough? There's only one way to tell and that's by attending the game and finding out. One thing is for sure, both teams will be 0-0 at kickoff and a new season of excitement will get off in prime shape.

I have the opportunity to get away for vacation for a week, but I will be back for the home opener. Also, we'll be doing a feature on Major League Baseball's ball parks. I have a chance to see San Diego's Jack Murphy Stadium, Anaheim Stadium, Dodger Stadium, Busch Memorial Stadium, Three Rivers Stadium in Pittsburgh, Veteran's Stadium in Philly and of course, Shea Stadium in New York. The story will be about the ball parks, what they offer the consumer and the seating locations. I think the baseball fan will be very interested in the comparisons.

Here is the answer to last week's quiz. The question was, when was the last time the New York Jets defeated the San Diego Chargers prior to their victory on opening day. The answer: The Jets stopped the Chargers, 27-14 back in 1974. The two teams met again in 1975 when the Chargers won, 24-16. They did not play each other again until opening day, 1983. By the way, the last time the Jets beat the Chargers in San Diego came back in 1968, a 37-15 trouncing en route to the Jets Super Bowl victory. So, if beating the Chargers in San Diego is any indication, the 1983 Jets should win the Super Bowl.

For this week's quiz, everyone knows about the celebrated Seattle Seahawk jinx over the Jets. Can you remember the score of the first game these two teams played, the year it was played and the quarterbacks for both clubs?

Heard At Ringside

By Steve Frank

Junior welterweight Joe Frazier, Jr., youngest son of former world heavyweight champ, won his fifth straight victory, all by knockouts, at The Tropicana in Atlantic City, Tuesday. Frazier rushed from his corner swinging lefts and rights from all directions to score at KO at :58 of the first round over Curtis Roach of Reading, Pa. In the main bout on the card, heavyweight James "Bonecrusher" Smith of Magnolia, N.C., won via the knockout route over veteran Walter Santemore of New Orleans. The end came for Santemore in the fourth round at 1:54. The card was co-promoted by Don Elbaum and Ted Menas.

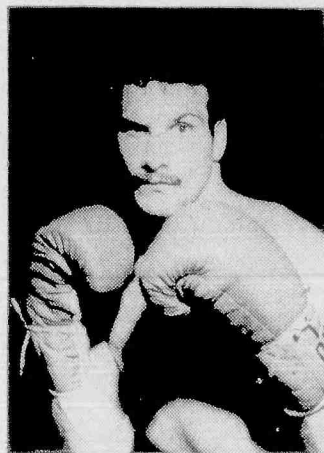
Pat O'Grady, manager of several fighters from the Oklahoma area including his son, former WBA lightweight champion Sean, has dropped all connections with heavyweight Monty Masters of Oklahoma City. Pat's daughter, who has separated from her husband (Masters) could be the reason.

Heavyweight Tim Witherspoon of Philadelphia will square off Renaldo Snipes of White Plains, N.Y., in a scheduled 10-rounder on the Dokes-Coetzee title card on Sept. 23, at Richfield (Ohio) Coliseum, promoter Don King announced.

Michael Spinks, owner of the WBA and WBC 175-pound titles, and his promoter Butch Lewis are scanning the woods for a worthy opponent. Translation: They mean an opponent who will draw at the box office and TV sponsorship. The light-heavyweight division, historically a division of indifference, has been ho-hum since the 1930s. Among the light heavies at that time who were arena-fillers: Lou Scozza, Tony Shucco, Paul Berlenback, Jack Delaney, Maxie Rosenbloom, Jimmy Slattery, Tiger Jack Fox, Tommy Loughran, John Marullo, Johnny Risko, King Levinsky, John Henry Lewis and many more.

The United States Boxing Association International (USBAI) formally opened its headquarters at the Quality Inn, 50 Park Place, Newark, on Friday. Robert W. Lee, president of the organization and Deputy Boxing Commissioner for the State of New Jersey, presided.

Michael Garrahan, an unbeaten heavyweight with unlimited potential of Northport, L.I., has joined North Jersey manager Lenny Shaw's stable of outstanding fighters. The 26-year-old fighter of Italian-Irish decent is presently training at Shaw's new training facilities in Montgomery, N.Y. Garrahan's last ring action was Nov. 28, 1979, after which he ran afoul of the law and served time at the Chester County Center, West Chester, Pa. After nearly four years out of the "wars" he will again enter the ring on Sept. 28 to take on Lee Smith of Hampton, Va., at the CYC Arena in Scranton, Pa., in a six-rounder.



Mike Garrahan

Joe Nash, 148, Philadelphia, W (split) Dec. over Joe Bradford, 153½, Philadelphia; Nasser Ali WKO at :31 of sixth round over Vernon Reed, 162 of Pittsburgh, Pa.; Angel Sindo, 150, Camden, N.J. WTKO at 2:48 of first round over Ali James Gibson, 148, Philadelphia and Mark Frazier, 163½, Philadelphia WKO at 3:00 of second round over Darryl Brown, 169, Philadelphia. It's worth the trip to Philadelphia to see action fights. Sy Roseman handles the publicity chores.

Alberto Davilla, 55-7-1, of Pomona, Calif., captured the WBC bantamweight crown, Sept. 1, with a savage left-right combination in the final (12) round to score a KO over (Francisco) Kiko Bines 26-8, of Mexico. The bout was fought at the Los Angeles Olympic Stadium for the vacant title. Bines was rushed to the County-USC Medical Center when the ring doctors could not revive the fighter. The reigning champ Lupe Pinter had been prevented from defending the title within the required WBC limit due to a serious motorcycle accident.

Undefeated, middleweight Kevin Moley of Seldon, L.I., is trying to cope with setbacks. Moley's manager, 46-year-old, Paddy Flood took the long count as the result of a heart attack. His trainer Tony Canzi, age 71, succumbed from the aftermath of a stroke. Al Certo of Secaucus, Paddy's close friend, is not handling Moley's business.

Members of the U.S. Junior Olympic Boxing Team went on a rampage after a party at a local Connecticut Elks Club according to Central Connecticut University officials. The athletes allegedly stayed up all night after the social and went wild running up a \$1,677 bill for repairs and replacement parts for the damaged dormitory at the university.

An interesting fact of the Holmes-Frank bout is it was the first heavyweight championship fight in New Jersey in 62 years. On July 12, 1921, Jack Dempsey retained his world heavyweight crown by knocking out Georges Carpenter in the fourth round at the former Boyle's Thirty Acres Stadium in Jersey City.

"Roger Stafford spent pre-fight time on his knees saying his Muslim prayers instead of warming up to fight WBA welterweight champ Donald "Cobra" Curry, Jay Edson of Top Rank Promotions said. "Stafford prayed for more than 15 minutes," Edson repeated. "I was in the dressing room and kept telling him time was getting near, but he wouldn't warm up." Curry won the fight via a TKO at 1:42 of the first round. The bout was fought at Marsala, Sicily.

How come referee Arthur Mercante can work as a color analyst for ESPN boxing shows and officiate fights at Madison Square Garden, Felt Forum and other New York State arenas? New York commission has a rule that referees and judges must not write, give TV or radio commentary about active fighters. The commission claims it is a conflict of interest.

Emanuel "Manny" Steward would never agree to train any boxers not belonging to the Kronk Boxing Team of Detroit. For \$50,000 he changed his mind and will train Aaron Pryor for his title defense against Alexis Arguello at Caesars Palace in Las Vegas, Nevada.

Mike Mc Callum, WBA and WBC's No. 1 rated junior middleweight nudged his record to 19-0 Wednesday by sending Jose Vallejo of the Dominican Republic to slumberland at the end of the fifth round. The scheduled 10-rounder was held at The Sands in Atlantic City. Mc Callum is a native of Jamaica. He now lives in Valley Stream, L.I. He does his training in the Detroit's Kronk gym under the eagle eyes of manager-trainer Manny Steward. In the co-feature 10-rounder Reyes Cruz of Dominican Republic, now of Paterson, won a unanimous decision over Darryl Fuller of Nashville, Tenn. They are junior welterweights. Vallejo's record fell to 27-9. Cruz now sports a 22-0 and Fuller dropped to 12-3-1.

Junior welterweight Joe Manley, originally of Detroit now fighting out of Atlantic City, won the scheduled 10-round grudge rematch with Al "Earthquake" Carter of Youngstown, Ohio, decisively on Tuesday, at Atlantic City's Tropicana. Manley in raising his record to 13-1 was in control throughout the battle. Referee Joe O'Neill stopped the bout at 2:21 of the seventh round.

NFL Report

Giants Control Ball and Atlanta, 16-13; While Jets Fumble To Seahawks, 17-10

By Mike Lamberti

If the New York Jets never see the Seattle Seahawks again, it will be too soon. For the seventh time in seven games, the Jets were beaten by the nemesis from the Northwest, this time by a 17-10 count in a contest marred by fumbles, interceptions and horrible officiating.

On the other side of the coin, the Giants notched win number one with a 16-13 OT victory at Atlanta. What a difference a week makes. At the conclusion of week number one, the Jets were toasts of the town and the Giants were the same old misfits who couldn't mount an offense against a mediocre Rams squad. Now, both squads are 1-1 with a tough part of the schedule approaching.

The Jets managed one touchdown against Seattle, had another called back on perhaps the worst call in the history of the NFL and squandered numerous scoring chances with inopportune fumbles, costly interceptions and bad penalties. It was a game they should have won, a game they had won, but a contest that just wasn't meant to be. It seems that those excuses are used every time the Jets and Seahawks play. Luckily for New York, they won't meet again this season. For you opportunistic folks, the 1968 Super bowl Jets were 11-3, with two of the losses coming against the AFL's two worst clubs, Denver and Buffalo. As a matter of fact, Buffalo was 1-12-1 in 1968 with the only win against the Jets.

For this week's picks:

JETS at NEW ENGLAND: The record says the Jets are supposed to win this game outright. No questions, no problems. The Jets are the more talented squad, have a better defense and should win by 14 points or more. New England comes in 0-2, having lost to Miami and Baltimore, but something says the Pats will cover the spread and could give the local heroes a problem. Go with the Jets, but not easy. Jets 24-21.

CINCINNATI at CLEVELAND (Tonight): The Bengals are in the midst of a major disaster. They're 0-2, have scored but one touchdown in two outings and run into a fired up Browns team that can score points. Worst off, the Bengals play this one

in the Browns backyard. The situation could be desperate, but Anderson, Collinsworth, Ross and Alexander could muster up enough to hold off the inconsistent Browns. Try Cincy, they have to break out of it. Bengals 24-17.

GIANTS at DALLAS: The Cowboys, despite their problems off the field, are putting it together on the field. Their first home game will spell instant doom for the Giants, who weren't too impressive in the win against Atlanta. Cowboys will have everything blazing, it could be a total wipeout. Dallas 42-21.

BALTIMORE at BUFFALO: These are two teams that come in with 1-1 records, although neither is that good. About the only determining factor is the home field and a better offense on Buffalo's part. Buffalo 16-13.

KANSAS CITY at WASHINGTON: The Chiefs are a good ball control offense, but playing in the beehive, better known as RFK Stadium, can spell big trouble, especially for a young, visiting team. The Skins came back strong against Philly after blowing the Dallas game and have better personnel. That usually wins ball games. Washington 28-17.

L.A. RAMS at GREEN BAY: Big contest. Rams are surprising 2-0 if they pull this one off, will be a big obstacle in the West. Packers lost to Steelers last week, which is no crime, and should be primed for a comeback. Problem for Green Bay is stopping Ferragamo who is off and running and holding down Dickerson. The Pack passing game will make things tight, but Rams should be strong. L.A. 17-16.

MINNESOTA at TAMPA BAY: The Bucs were the best in the NFL, during the pre-season. Since the season started, they've been nothing short of putrid. The Vikes started off well, but were lousy in losing to San Fran and should bounce back. Kramer doesn't have too many bad games and Buc quarterback position hasn't been too good. Minn. 24-13.

Soccer League Opens Season

The season opened for Belleville Americans (Div. III), Belleville Flash (Div. IV), and Belleville Blast (Div. V) in Elmwood Park. Belleville Soccer Association is a new entry into the Progresso Suburban Youth Soccer League, and they immediately showed their strength.

The Belleville Americans sponsored by Caputo Florist and DeBacco Bros. won a thriller 6-5 on strong play from Mark Tobia, Steve Hywell and a balanced attack and steady defense.

The Belleville Flash sponsored by Casa Pollizzi outclassed their opponents 10-0. The name of the game was defense. Elmwood Park had no shots on goal and The Flash dominated the entire game. Robert Ricci, Mike Alfano and Mike Capasso were outstanding.

The Belleville Blast sponsored by Flowerama blasted their counterpart 13-1 with steady strong play from Chris Marcantunno, Scott Dorey, Billy Kimball, Charlie Giachetti, Frank Kock and Jimmy Wandling.

Coach Fuccello Is Optimistic About Season

(Continued from page 11.)

De Aquino, an experienced second singles player and young Johansen at third can continue the momentum.

"We have some good young players coming up," said Fuccello, referring to some eighth graders. "It's a tough haul this season, however, and we have to go with the players we have now. The early part of the season will be tough. Teams like Fair Lawn, Bloomfield and Ridgwood are powerful clubs. We'll certainly be tested."

NOTES: Indeed, the girls will face some tough competition in the NNJIL. Ridgwood, Montclair, Teaneck, Hackensack, Bloomfield, St. Joseph's of Montvale and Passaic Valley are all solid clubs. They should be some very interesting matches.

Secretarial skills are in great demand



The Berkeley Schools are the largest source of executive secretaries in the New York metropolitan area. Give yourself the professional advantage by preparing for a successful secretarial career at Berkeley.

DAY OR EVENING CLASSES START SEPTEMBER 26.

You owe it to yourself to call:
Mrs. Pepe

278-5400

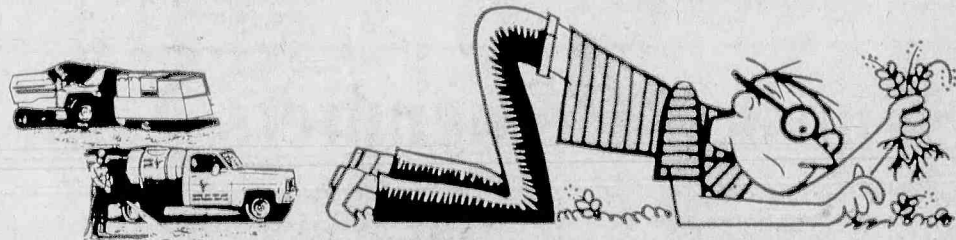
THE BERKELEY SCHOOL

Garret Mountain Campus, Little Falls, New Jersey

A History of The Nutley Velodrome

A Special Golden Anniversary Edition
Written By M.C. Gabriele, Editor of The Nutley Sun. A Full History of Bicycle Races, Midget Car Races, and Boxing Matches Held At The Legendary Nutley Velodrome. Rare Photos, Biographies, Features and Facts Included in The Booklet. To Order, Call:
667-5669

Lawn Gone?



Time to call Lawn King

All lawns need an annual program of lawn care and every program must contain both granular and spray. Some chemicals work better when applied in a granular form, and others, like weed controls and post emergent crab grass controls, work better in a liquid form. All lawns also require periodic aeration and seed, but only Lawn King gives all these via LAWN COMBINE & SPRAY — THE BETTER WAY! WE KNOW IT'S THE ONLY WAY!!!

LAWN KING ANNUAL PROGRAM

1. Power Aeration Power Rolling Balanced Fertilization Broadleaf Weed Control Fungus Control Pre-Emergent Crabgrass Control Pelletized Lime	2. Balanced Fertilization Broadleaf Weed Control Fungus Control Chinch Bug Control Sod Webworm Control Grub Control (Liquid)	3. Balanced Fertilization Broadleaf Weed Control Fungus Control Chinch Bug Control Sod Webworm Control Mulleps (Micronutrients) Grub Control (Liquid)	4. Power Aeration & Rolling Balanced Fertilization Broadleaf Weed Control Fungus Control Post-Emergent Crabgrass Control Seed Pelletized Lime	5. Balanced Fertilization (Extra Heavy Rate) Pelletized Lime
--	---	---	--	--

We are chemical applicators, not miracle workers. We know what your lawn needs and when it needs it. What you see in the program, is what you get. Top quality chemicals and seed — only the best — that's all we use. There's no such thing as specially formulated for drought.

Aeration, seed and lime are part of our program. Fungus controls and grub controls have always been part of our program — not options at extra cost when you need them. By the time you know you need them it's too late anyway. No slopes please. If we can't aerate twice a year we can't help you.

OPTIONAL PREPARATORY SERVICE

Double Power Aeration Double Power Rolling Double Weed Control	Balanced Fertilization Fungus Control Grub Control (Granular)
--	---

1¢ PER SQUARE FOOT (min. 3,000 sq. ft.)



CALL 994-2255

Someone will call to discuss the lawn with you. There's a one time charge if you need any extras like a preparatory service, extra seed or additional lime. We'll tell you what you need. We may not be the cheapest lawn service around but we are the only ones who give your lawn everything it needs at a price you can afford to pay. You can figure your costs from the chart below. No contracts to sign, no guarantees, no promises, no slopes, and no nonsense. Pay from service to service or prepay for the year and we'll give you a 5% discount too!

If you compare our program and prices with any other company, you'll find that either they are charging too much, or we are not charging enough! Look at it real close and you may even arrive at the conclusion that not only is it better to do business with us — it's cheaper too!

SQUARE FOOTAGE	COST PER SERVICE	TOTAL ANNUAL COST
3,000	27.60	138.00
4,000	32.20	161.00
5,000	36.80	184.00
6,000	41.40	207.00
7,000	46.00	230.00
Each additional 1,000 sq. ft.		34.50

Prices may vary from dealer to dealer.

New Garbage Contract Wins Approval, 4-1

(Continued from page one.)

ordered by the court. Feeling that BFI had duped them, Commissioners rejected both July bids and decided to readvertise last month. However, on August 18, BFI was the sole candidate.

Third time around, the firm submitted figures slightly lower than the July ones, but still unsatisfactory to the officials. BFI asked in August \$598,425 for one year, \$1,925,497 for two years, and \$3,498,742 for five years.

Feeling pressured to protect the township, the board decided on the one-year offer. Additionally, Township Attorney Frank Zinna noted legal avenues were closed when the Supreme Court last month denied Belleville's application for further hearing on the original contract, dashing hopes of retaining the more economical deal.

Zinna also cautioned Commis-

sioners that BFI could also refuse to continue their per diem service and leave Belleville stranded.

Representing BFI Tuesday was the firm's North Jersey president, Thomas Loy.

Loy, who did not comment publicly on the matter, attempted to leave the session hurriedly skirting efforts to elicit comment by a reporter.

When asked for comment on the Commissioners decision to reduce their contract terms by two years, Loy said, "whatever they decide." When asked why the prices of his firm rose so dramatically he said, "that's what they are," and ran down the steps of Town Hall.

Meantime, local activist Joseph Fornarotto has been researching scavenger practices in communities that serve themselves and plans to submit what he claims are more economical costs to the board next month.

COLLEGE IN THE COMMUNITY

Earn College Credits for a degree, transfer or job advancement

ESSEX COUNTY COLLEGE is offering these courses for the BELLEVILLE ADULT SCHOOL:

- College Biology I
- College Composition I
- General Psychology I
- Introduction to Criminal Justice
- Principles of Marketing
- Principles of Real Estate Salesperson

Fall Program
Oct. 3 - Jan. 12

Register on Sept. 19, 20 & 21
7-9 p.m. at Belleville High School

For More Information & Mail Registration
Call Essex County College at 877-3106

The Belleville Dermatology Center, P.A.
(Formerly the practice of John Forline, M.D.)

Announces the opening of
The Laser Treatment Center

For the Treatment of:

- Herpes Lesions
- Tattoos
- Birthmarks
- Keloid Scars
- Warts
- Rosacea
- Skin Tumors
- "Spider Veins"
- Port Wine Stains

And Other Skin Conditions

For Information and Appointments

Call 751-1200

Joseph S. Eastern, M.D.

Clara Maass

Professional Center West

Suite 306

50 Newark Ave. Belleville

Certified, American Board of Dermatology

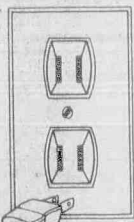
Fellow, American Academy of Dermatology

Fellow, American Society For Laser Medicine & Surgery

**WARNING:
IF YOU THINK
THE POWER
IS OFF
WHEN THE SWITCH
IS OFF
YOU'RE WRONG.**

KEEP AWAY FROM WATER.

Everyone knows that electricity and water are a dangerous combination. But did you know that an electric appliance is still electrically alive even if the switch is off? If the plug is in, the power is on. So when you keep appliances near water, keep them unplugged.



**ALWAYS UNPLUG
SMALL APPLIANCES.**

Public Service ad from Association of Home Appliance Manufacturers and Underwriters Laboratories, Inc.



Show
your
car
you
care.

Have Your Car Serviced
By A Professional
N.I.A.S.E. Certified
Automobile Technician
(At no extra cost)

OL' BETSY AUTO REPAIR

504 Washington Ave. Belleville

All Work Fully Guaranteed 759-5561

Over 20 Years Experience

Snow Plowing

N.J. Re-Inspection

Just need some advice? Don't know where to turn. Stop in or call Tedo for some straight talk about your car problems.



**ASK
YOUR
REALTOR®**

By Jan Zepka

It cannot be said too often that buying a home is one of the most important steps in an individual's life. In fact, preparation for house hunting should be as important as preparing for a career move, or even a marriage.

Knowing your specific needs, likes, prejudices and financial limits are not only important to you in choosing the right home, but even more important to your Realtor in finding it for you.

Start your "house hunt" by preparing a list of what you "must" have in a house, as well as what you "want" to have, indicating your priorities. Include the style of architecture and neighborhood, as well as the importance of school districts, public transportation and shopping areas.

Decide on the number of bedrooms and bathrooms you will need, whether an eat-in kitchen or dining room is essential, and indicate a future need for expansion.

Understand that your "wants" will be different from your "needs". You might want a fireplace in the living room, but you "need" a den or family room to accommodate your lifestyle.

After you've made your check-list, communicate your needs to your Realtor. Give your agent an understanding of your personal requirements to enable him to help you make the right choice and the right compromises.

According to the Board of Realtors of Bloomfield, Glen Ridge, Nutley and Belleville, it is essential that buyers have a priority list so their "desires" in a home can be adjusted to agree with their price range.

Your Realtor wants to find a house you will be happy living in, but only you can communicate your needs in order to make the right choice and a wise investment.

For further advice in "house hunting" contact the

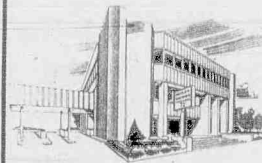
**Board of Realtors of Bloomfield
Glen Ridge, Nutley and Belleville
375 Broad Street
Bloomfield, N.J. 07003**

COMMUNITY SERVICE



JOHN V. KELLY, President

**"IT'S OUR MOST
IMPORTANT
INVESTMENT."**



Nutley Savings
AND LOAN ASSOCIATION

MAIN OFFICE:
371 Franklin Avenue, Nutley, N.J. 07110 • Phone: 861-3200
BRANCH OFFICE:
221 Washington Street, Newark, N.J. 07102 • Phone: 823-7090

THE N.Y. STUDIO IN N.J.

JAZZ

Dick Shell

BALLET

Lorraine Shell

288 Stuyvesant Avenue, Lyndhurst, N.J. Phone: 480-1068

CLASSIFIED ADS sure to get results

In The Nutley Sun, Belleville Times and Bloomfield Life

667-3000

DEADLINE TUES. 12 NOON

ANNOUNCEMENTS

MARY'S THEATER PARTIES

FOR GROUPS & INDIVIDUALS

Sept. 25-"Claridge AC. 813-1111"
Sept. 27-"Cats"
Sept. 29-"Pegasus"-Race Track
Oct. 19-"Cats"
Oct. 22-"Nine" Sat. mat.
Oct. 29-"My One & Only"
Nov. 3-"On Your Toes"
Nov. 5-"Flemington Shopping Tour"
Nov. 12-"Reading, Penn."

Above includes orchestra seat, dinner, trans. tax & tip to dinner.
20 PASSENGER LUXURY COACHES TO ATLANTIC CITY 9/29
998-1268

BELLEVILLE

YELLOW CAB

OUT OF TOWN TAXI SERVICE - ANYWHERE.

AIR CONDITIONED

CAB

759-2000

EXPERIENCED SEAMSTRESS

ALTERATIONS AND REPAIRS

REASONABLE RATES.

CALL 667-3817

ASK FOR CATHERINE

NOVENA TO ST. JUDE

This novena has never been known to fail. This novena, must be said for 9 consecutive days. Publication must be promised.

O Holy St. Jude, Apostle and Martyr, great in virtue and rich in miracles, near kinsman of Jesus Christ, faithful intercessor of all who invoke your special patronage in time of need, to you I have recourse from the depth of my heart and humbly beg to whom God has given great power to come to my assistance. Help me in my present urgent petition. In return, I promise to make your name known and call you to be invoked. St. Jude, pray for us all who invoke your aid.

Amen
Say 3 Our Father's, 3 Hail Mary's and 3 Gloria's.

Y. La R.

I DO TYPING AND GENERAL OFFICE WORK

IBM SELECTRIC

YOUR OFFICE OR MY HOME

REASONABLE RATES.

\$2.00 DOUBLE SPACE PAGE.

\$3.00 SINGLE SPACE PAGE.

CALL 667-8752

IF NO ANSWER CALL

343-9392-24 HOURS A DAY

9/22

LEARN TO DRIVE THE

"EASY-WAY"

PERMIT AT 16 yrs of age.

ROAD TEST DATE ON YOUR

17TH BIRTHDAY.

REDUCTION IN INS. RATES.

667-8590

759-8774

12/8

ARE YOU TIRED OF BEING OVERWEIGHT?

HERBAUFE WEIGHT LOSS PROGRAMS.

Safely lose 10-29 lbs. per month. Nutritional weight maintenance. Maintain your body's natural balance. And best of all you can eat while on the diet. All this with a money back guarantee. For more info call:

2/16

MR. BRODERICK 744-9102

SEWING, HEMMING & ALTERATIONS

REASONABLE RATES

CALL 667-3485

2/9/1

"LUCY" CUSTOM TAILOR FOR WOMEN

PROFESSIONALLY MADE BRIDAL GOWNS & BRIDAL PARTY GOWNS. CUSTOM MADE COCKTAIL DRESSES & EVENING GOWNS. EXPERT ALTERATIONS. SPECIALIZING IN LARGER SIZES.

CALL 751-4080 OR 751-1791

12/22

AUTOMOTIVE

1971 DUSTER, A/C. GOOD RUNNING CONDITION.

CALL 661-3252.

1971 PONTIAC \$300. GOOD CONDITION. CALL 667-5531.

1978 CHEVY CHEVETTE

4 SPEED, AIR CONDITION, 40,000 mi. ASKING \$2200. Call

284-0468

after 5PM

1971 OLDSMOBILE 88-Black, 4 door sedan, \$600.

1979 DODGE VAN, Good condition, \$4,000. Call 751-4781 mornings.

"78" CAD. SEDAN DE VILLE ELEGANCE. Fleetwood interior. Full power. All extras must be seen. \$6,250. Call 746-4575 Anytime.

1978

CHEVY CHEVETTE

4 SPEED, AIR CONDITION, 40,000 mi. ASKING \$2200. Call

284-0468

after 5PM

1971 OLDSMOBILE 88-Black, 4 door sedan, \$600.

1979 DODGE VAN, Good condition, \$4,000. Call 751-4781 mornings.

"78" CAD. SEDAN DE VILLE ELEGANCE. Fleetwood interior. Full power. All extras must be seen. \$6,250. Call 746-4575 Anytime.

1978

CHEVY CHEVETTE

4 SPEED, AIR CONDITION, 40,000 mi. ASKING \$2200. Call

284-0468

after 5PM

1971 OLDSMOBILE 88-Black, 4 door sedan, \$600.

1979 DODGE VAN, Good condition, \$4,000. Call 751-4781 mornings.

"78" CAD. SEDAN DE VILLE ELEGANCE. Fleetwood interior. Full power. All extras must be seen. \$6,250. Call 746-4575 Anytime.

1978

CHEVY CHEVETTE

4 SPEED, AIR CONDITION, 40,000 mi. ASKING \$2200. Call

284-0468

after 5PM

ANNOUNCEMENTS

MARY'S THEATER PARTIES

FOR GROUPS & INDIVIDUALS

Sept. 25-"Claridge AC. 813-1111"
Sept. 27-"Cats"
Sept. 29-"Pegasus"-Race Track
Oct. 19-"Cats"
Oct. 22-"Nine" Sat. mat.
Oct. 29-"My One & Only"
Nov. 3-"On Your Toes"
Nov. 5-"Flemington Shopping Tour"
Nov. 12-"Reading, Penn."

Above includes orchestra seat, dinner, trans. tax & tip to dinner.
20 PASSENGER LUXURY COACHES TO ATLANTIC CITY 9/29
998-1268

BELLEVILLE

YELLOW CAB

OUT OF TOWN TAXI SERVICE - ANYWHERE.

AIR CONDITIONED

CAB

759-2000

EXPERIENCED SEAMSTRESS

ALTERATIONS AND REPAIRS

REASONABLE RATES.

CALL 667-3817

ASK FOR CATHERINE

NOVENA TO ST. JUDE

This novena has never been known to fail. This novena, must be said for 9 consecutive days. Publication must be promised.

O Holy St. Jude, Apostle and Martyr, great in virtue and rich in miracles, near kinsman of Jesus Christ, faithful intercessor of all who invoke your special patronage in time of need, to you I have recourse from the depth of my heart and humbly beg to whom God has given great power to come to my assistance. Help me in my present urgent petition. In return, I promise to make your name known and call you to be invoked. St. Jude, pray for us all who invoke your aid.

Amen
Say 3 Our Father's, 3 Hail Mary's and 3 Gloria's.

Y. La R.

I DO TYPING AND GENERAL OFFICE WORK

IBM SELECTRIC

YOUR OFFICE OR MY HOME

REASONABLE RATES.

\$2.00 DOUBLE SPACE PAGE.

\$3.00 SINGLE SPACE PAGE.

CALL 667-8752

IF NO ANSWER CALL

343-9392-24 HOURS A DAY

9/22

LEARN TO DRIVE THE

"EASY-WAY"

PERMIT AT 16 yrs of age.

ROAD TEST DATE ON YOUR

17TH BIRTHDAY.

REDUCTION IN INS. RATES.

667-8590

759-8774

12/8

ARE YOU TIRED OF BEING OVERWEIGHT?

HERBAUFE WEIGHT LOSS PROGRAMS.

Safely lose 10-29 lbs. per month. Nutritional weight maintenance. Maintain your body's natural balance. And best of all you can eat while on the diet. All this with a money back guarantee. For more info call:

2/16

MR. BRODERICK 744-9102

SEWING, HEMMING & ALTERATIONS

REASONABLE RATES

CALL 667-3485

2/9/1

"LUCY" CUSTOM TAILOR FOR WOMEN

PROFESSIONALLY MADE BRIDAL GOWNS & BRIDAL PARTY GOWNS. CUSTOM MADE COCKTAIL DRESSES & EVENING GOWNS. EXPERT ALTERATIONS. SPECIALIZING IN LARGER SIZES.

CALL 751-4080 OR 751-1791

12/22

AUTOMOTIVE

1971 DUSTER, A/C. GOOD RUNNING CONDITION.

CALL 661-3252.

1971 PONTIAC \$300. GOOD CONDITION. CALL 667-5531.

1978 CHEVY CHEVETTE

4 SPEED, AIR CONDITION, 40,000 mi. ASKING \$2200. Call

284-0468

after 5PM

1971 OLDSMOBILE 88-Black, 4 door sedan, \$600.

1979 DODGE VAN, Good condition, \$4,000. Call 751-4781 mornings.

"78" CAD. SEDAN DE VILLE ELEGANCE. Fleetwood interior. Full power. All extras must be seen. \$6,250. Call 746-4575 Anytime.

1978

CHEVY CHEVETTE

4 SPEED, AIR CONDITION, 40,000 mi. ASKING \$2200. Call

284-0468

after 5PM

1971 OLDSMOBILE 88-Black, 4 door sedan, \$600.

1979 DODGE VAN, Good condition, \$4,000. Call 751-4781 mornings.

"78" CAD. SEDAN DE VILLE ELEGANCE. Fleetwood interior. Full power. All extras must be seen. \$6,250. Call 746-4575 Anytime.

1978

CHEVY CHEVETTE

4 SPEED, AIR CONDITION, 40,000 mi. ASKING \$2200. Call

284-0468

after 5PM

1971 OLDSMOBILE 88-Black, 4 door sedan, \$600.

1979 DODGE VAN, Good condition, \$4,000. Call 751-4781 mornings.

"78" CAD. SEDAN DE VILLE ELEGANCE. Fleetwood interior. Full power. All extras must be seen. \$6,250. Call 746-4575 Anytime.

1978

CHEVY CHEVETTE

4 SPEED, AIR CONDITION, 40,000 mi. ASKING \$2200. Call

284-0468

after 5PM

AUTOMOTIVE

AUTOMOTIVE

NOW BUYING!!!

FOR CASH!! **** ANY TYPE CAR
BRING TITLE **** IMMEDIATE PAYMENT
BELL PIKE MOTORS
COR. BELLEVILLE PIKE & RIVER RD.
NORTH ARLINGTON
(Across from Arlington Diner).
998-4368

SPORTS CAR CITY

DANZA AUTO BROKERAGE

'75 thru '80

•CAMAROS •FIREBIRDS

Assume Payments • Repossessions

• 12 MONTH or 20,000 GUARANTEE

262 Rt. 17 N., Hasbrouck Heights

288-2776

1/1/2

AUTO SERVICE

FREE TOWING & ROAD TESTS

Kirk's

AUTOMATIC TRANSMISSIONS INC.

STANDARD & AUTOMATIC

4 WHEEL DRIVE TRUCKS & CARS

FREE ESTIMATES

998-9666

(Across from North Arlington Diner)

20 RIVER ROAD, NORTH ARLINGTON

11/3

AUTO INSURANCE

AUTO INSURANCE

IMMEDIATE COVERAGE

MINIMUM DOWN PAYMENT 10 CARDS ISSUED AT ONCE

NO ONE REFUSED DUE TO DRIVING RECORD AND AGE

ANY DRIVER

CHECK OUR RATES

DELSON ASSOCIATES

Thomas Delaney

138 Bloomfield Ave.

Bloomfield, N.J. 07003

743-5582

MON.-FRI.

10 AM-5 PM

7 PM-8:30 PM

SAT 10 AM-3 PM

2/2

AUTO WRECKERS

BIB'S

ATTENTION! AUTO PARTS

\$60

Will Pay \$60 For Any Junk Car In Any Condition

WE PAY CASH

"Highest Prices Paid For Late Models"

USED CARS & TRUCKS

USED 991-4246 or 991-0081 USED

PARTS 54 Stover Ave., Kearny PARTS

1/1/9

AIR COND. & REFRIG.

THEFT-GUARD SECURITY

SPECIALIZING IN BURGLAR & FIRE ALARMS

FREE ESTIMATES

FULLY INSURED

CALL 748-7111

2/23

CRAIG WYNN

AIR CONDITIONING & REFRIGERATION

DOMESTIC & LIGHT COMMERCIAL

CALL 674-5002

ANYTIME

2/2

ALUM. & VINYL

CLEANED

Thousands Of Homes Served In N.Y. & N.J.

Low Cost Quality Work Guaranteed In Writing

Fully Insured

Call Now For Free Est.

661-2971

Look On The Brite Side

1/12

ALUMINUM & VINYL SIDING

Thousands Of Homes Served In N.Y. & N.J.

Low Cost Quality Work Guaranteed In Writing

Fully Insured

Call Now For Free Est.

661-2971

Look On The Brite Side

1/12

KITCHEN MAGIC

BY CLAREMONT KITCHENS, INC.

WINNER 1974-1978

1982 NATIONAL CONTRACTOR OF THE YEAR

KITCHEN-BATH PROFESSIONALS

We Cater To Do-it-yourselfers

CALL 746-6110

Anytime

720 BLOOMFIELD AVE.

MONTCLAIR, N.J. 2/16

ALUMINUM & VINYL SIDING

Thousands Of Homes Served In N.Y. & N.J.

Low Cost Quality Work Guaranteed In Writing

Fully Insured

Call Now For Free Est.

661-2971

Look On The Brite Side

1/12

CARPETING & LINOLEUM

REALLY RUGS

CARPETING & LINOLEUM SALES

"Specializing in Repairs"

Free Estimates

Shop At Home Service

Call: 759-1123

10/20

CARPENTERS & BUILDERS

Rehab

CARPENTRY SERVICE

ALTERATIONS-EXTENSIONS

MASONRY-HANDYMAN WORK

LANDSCAPING

BLAIRS GARDEN CENTER
652 Centre St., Nutley
(Cor. Ridge Rd.) 667-0991

• POTTED ROSES
REGULAR \$10.95
SALE \$6.50
FULL BLOOM

• BLAIR'S FERTILIZER & GRASS SEED \$10.50
• GREENVIEW FERTILIZER \$9.95
• SCOTT'S FERTILIZER & GRASS SEED \$12.95
ALSO LIME

Mon. thru Sat. 8-5 P.M.
Sun. 9-1 P.M.

MASONRY

Bricks • Steps • Stucco • Patios
Retaining Walls • Sidewalks

A & L MASON
"unique in cement"

Free Estimates

JOE AFFUTTO
481-3573

MISC. SERVICES

APPLIANCE REPAIRS
We repair refrigerators, freezers, ranges, wall ovens, washer & dryers.

ALL MAKES & MODELS
Call VINNIE
731-5148 or 739-4230
7 days

SEWING MACHINE REPAIRS
ALL MAKES
HOME SERVICE
FREE ESTIMATES
30 YEARS EXPERIENCE
CALL 484-5522

WE REPAIR
• Washers • Dryers
• Refrigerators
• Freezers
• Air Conditioning

Commercial & Central
E. CROSSLEY & SON SERVICE 667-9278

SHOE REPAIRING
While-U-Wait
Handbag Repairing
Orthopedic Work
PLAZA BOOTERY
483 Franklin Ave., Nutley
667-8964

HANDYMAN
WHY PAY MORE
Home Repairs
Roofs, Gutters
Painting, Windows etc.
Free Estimates
"CALL JOE" 759-0724

REPAIR SERVICE
ON ALL WASHERS, DRYERS
& DISHWASHERS
SPECIALIZING IN GE APPLIANCES.
CALL L & M WASHERS
667-1565 9/15 667-1150

MOVING & STORAGE

PAUL'S
MOVING & STORAGE
Local & Long Distance. Packing
& Light Deliveries.
LOW RATES
Lic. 341

N.J. LOCAL MOVER
MOVE ANYTHING
ONE PIECE
OR FULL LOAD
FOR FREE ESTIMATE
CALL 478-8685

NORTHERN VAN LINES
QUALITY MOVING FOR OVER
20 YEARS
ALL FURNITURE PADDED
LOCAL AND SHORE TRIPS
CALL 743-3293
JOHN & RAY
INSURED-PUC #558

MAASS MOVERS
661-2528
RESIDENTIAL MOVERS
SERVING
ALL OF NEW JERSEY
LOCAL & LONG DISTANCE
INSURED MOVING & STORAGE
PUC #9

F & J MOVING
&
STORAGE CO.
Local & Long Distance
Fully Insured
CALL FOR FREE ESTIMATE!
Joe Cucuzza 751-2143

PAINTING

ANY 3 ROOMS PAINTED \$139.00

SENIOR CITIZENS
20% OFF
EXTERIOR PAINTING
WALLPAPER REMOVAL
TEXTURED CEILINGS
FAST, CLEAN WORK
667-5306
NUTLEY-BELLEVILLE
PAINTING 1/24

VICTOR TIRONDOLA
Painting Contractor
Interior & Exterior
PAINTING
GENERAL REPAIRS
Clapboards
Roofs, Leaders & Gutters
Also Some Carpentry Work

FRANK RUMEO
Painting/Decorator
Paperhanging
Int. & Ext.
Free Estimate
No Job Too Small
Fully Insured
998-7046
European Craftsman

A.N.G. PAINTING
CUT RATES.
SPECIAL DISCOUNTS
FOR SENIORS.
FREE ESTIMATES.
CALL ANGELO CENTANNI
759-3391

INTERIOR EXTERIOR
• FREE ESTIMATES
• WALL PAPER REMOVAL
• RELIABLE AND QUALITY
WORK
CALL NICK: 748-6379
Fully Insured

VICTORIAN PAINTING
COMMERCIAL & RESIDENTIAL
BELLEVILLE, N.J.
FREE ESTIMATES
FULLY INSURED
751-1448 OR 744-5806

PIANO RESTORATION

GOULD PIANO CRAFTSMEN
Complete Piano Service
15 Years Experience
Tuning • Restoration
Refinishing
Player Pianos • Pianocordes
Call
LES GOULD
672-4060

PLUMBING & HEATING

YOUR PLUMBING A MENACE?
CALL DENNIS
Plumbing & Heating,
Gas Boilers, Hot Water
Heaters, Bathrooms,
Kitchens, Repair Work.
Free Estimates.
759-4284
Dennis Gualtieri

WINDHEIM
PLUMBING-HEATING
418 Franklin Ave., Nutley
• GAS HEAT
• HOT WATER HEATERS
• DISPOSALS
• DISHWASHERS
• MODERNIZING
BATHROOMS — KITCHENS
667-6886

RON'S
Plumbing & Heating
Inc.
Plumbing-Heating
Air-Conditioning
Sewer Cleaning
24 Hour Service
743-2993
S.M.P.L. 6489

PAINTER HANDYMAN
(I'll do anything for you!)
PAINTING HOME REPAIRS
CLEANING ODD JOBS
MR J 667-1494

FUEL CO FUEL OIL C.O.D.
MINIMUM 200 GALLONS
24 HOUR
BURNER SERVICE
748-7011

RON FRITZ
PLUMBING & HEATING
NO JOB TOO SMALL
All types of Plumbing Repairs
New Installations
Fast Service
Reasonable Rates
Call Anytime
748-8374
N.J. State License #6420

PAINT WELL
PAINTING CONTRACTORS
RESIDENTIAL • COMMERCIAL • INDUSTRIAL

• Waterproofing • Wall Coverings
• Wet Sand Blasting
• Power Water Washing

751-4325

PLUMBING & HEATING

14 New Street
Belleville

KEEP YOUR PLUMBING YOUNG 759-1476

J.G. YOUNG & SONS INC.
PLUMBING & HEATING

State License #3684 & #990

KITCHEN & BATHROOMS REMODELED
AUTOMATIC FIRE SPRINKLER SYSTEMS

Gas Heat, Hot Water Heaters, Elec. Sewer Cleaning
Resident • Commercial • Industrial
Repairs, Alterations, New Construction

RECREATION

SUN GLO CORP.
ITALIAN
"BOCCE" BALLS
BILLIARDS, RECREATIONAL
SHUFFLEBOARDS &
ACCESSORIES
DOMESTIC & IMPORTED
CUES
GENUINE BELGIAN BALLS
111 Hecker St. Belleville
759-4474

TV SERVICE

Mercury
Tube Distributor
134 Washington Avenue
Nutley, N.J. 07110
(Between Centre St. & Park Ave.)

284-0522 284-0523

T.V. Parts Distributor
Receiving Tubes-Semiconductors
40% - 50% off list price
Cable TV converters
Cable Accessories - Photo Facts
Antennas - Antenna Wire
Cartridges-Needles-Cassettes
VHS & Beta Tapes
\$1.00 off on purchase
of \$7.50 or more

ROOFING & SIDING

HI-LO ROOFING CO.
227-4455 NUTLEY

Install hot tar roofs, shingles
leaders & gutters. Fully in-
sured. All work guaranteed
Free estimates. Industrial &
residential.

DON LUBY
ROOFING

INDUSTRIAL-COMMERCIAL
RESIDENTIAL

HOT TAR ROOFING
ONE,PLY SYSTEMS
SLATE-TILE-ASPHALT
SHINGLES
ALL WORK
FULLY GUARANTEED.
FREE ESTIMATES.
FULLY INSURED.
CALL 667-3768

BUSARDO ROOFING CO. INC.
Roofing-Seamless Gutters
Leaders & Chimney Work
Fully Insured - Reasonable
"NO JOB TOO SMALL"
Call Anytime! 471-0417
or after 5 p.m. 748-7330

ROOFING & REPAIRS
GUTTERS-CLEANING
INSTALLATION & REPAIRS
Prompt courteous service.
Free estimates
759-6160
TOM
See Gutter Ad

RAPID ROOFING REPAIR
• LEAK • PATCHES
• SLATE • ASPHALT
OUR SPECIALTY.
ALL WORK GUARANTEED.
Free Estimates
736-1605

BELLEVILLE
ROOFING
NEW & RE-ROOFING
GUTTERS AND LEADERS
FREE ESTIMATES
NO JOB TOO SMALL
CALL 759-1791

BUILT-RITE, INC.
ROOFING
SHINGLES, HOT TAR
(MINNIES, REPAIRS)
FULLY INSURED
FREE ESTIMATES
935-5189

VICTORIAN
CONTRACTING
ALL TYPES ROOFING.
FULLY INSURED.
FREE ESTIMATES.
CALL 751-1448 OR
744-5806

TILE

De Franco

COMPLETE TILE SERVICE
• Kitchen & Bathroom Remodeling
• Regrouting & Cleaning
731-7942
No Job Too Small

GENNA TILE
COMPLETE BATHROOM
MODERNIZATION
• NEW CONSTRUCTION
• REPAIRS
661-5172

JOE GRADY
CERAMIC TILE INSTALLED
REGROUTING
REPAIRS
COMPLETE MODERNIZATION
FAIR & HONEST PRICES
FREE ESTIMATES
CALL 667-1776

RUBBISH REMOVAL

RUBBISH REMOVAL
FREE ESTIMATES
CALL 736-1605

RUBBISH REMOVAL

RUBBISH REMOVAL
FREE ESTIMATES
CALL 736-1605

RUBBISH REMOVAL

RUBBISH REMOVAL
FREE ESTIMATES
CALL 736-1605

CHILD CARE

NURSERY SCHOOLS

ST. MARY'S SCHOOL HAS IT ALL!!

SAINT MARY'S SCHOOL

3 YEAR OLD PROGRAM.
4 YEAR OLD PROGRAM.
FULL DAY KINDERGARTEN.
AFTER SCHOOL CENTER FOR WORKING PARENTS.
FOR FURTHER INFORMATION
CALL 235-1100

Sandy Lane
Nursery School

"A CHILD'S WORLD
WHERE PLAYING IS LEARNING"

634 Mill Street
Belleville
751-6380

Days & hours to meet your needs
Hours: 7:30-5:45

Call or come in to register
School open to visitors
Development Programs in
• Arts • Music • Skills
• Language • Social Development
Continuous day care programs for working mothers
Nutritionally Balanced Lunch
State Licensed certified school & teachers

ACCEPTING REGISTRATION FOR THE
SUMMER AND SEPTEMBER
DEDICATED TO A PROGRAM OF EARLY CHILDHOOD EDUCATION.

ENERGETIC, LOVING MOM
wishes to care for toddler, 1 1/2
to 4 years, in her Nutley home.
Educationally stimulating en-
vironment, nap/lunch. Close to
Roche & park. References.
Call 661-0591

CHILD CARE

FRANCISCAN SISTERS
OF ST. ELIZABETH NURSERY
174 Franklin Ave. Nutley
Age 2-5 Yrs. Hours 7-5
Playroom, din. rm. rec. rm.
with TV & stereo records. Hot
lunch 11-30. Nap 12:30-2:30
Snack 3
Registrn. 6:30 Mon. or Tues.
eves.
Call 235-1170

HAPPY APPLE SCHOOL

The "seeds" of the future
are "planted" here.
Bethany Lutheran Church
Jorammon & New Sts. Belleville
Full-time & part-time
programs available
Register now for September
751-0633

FLEA MARKETS

REA MARKET, BELLEVILLE
REFORMED CHURCH, MAIN
& RUTGERS ST. SEPT. 17,
10-4 P.M. DEALERS
WANTED. CALL 759-4475.

FLEA MARKET/CRAFT SHOW
Saturday Oct. 1, 1983
10-4 P.M.
Park United Methodist Church
Broad St., Bloomfield
DEALERS WANTED
\$12.00 table. Refreshments
& lunch available.
Call 429-8257 or
9-1 P.M. call 429-7745

FLEA MARKET
BELLEVILLE SOUNDATIONS
JR. DRUM & BUGLE CORP.
AND
V.F.W. POST 275
SEPT. 24th, 1983
9am to 4pm
17 BELLEVILLE AVE.,
BELLEVILLE, N.J.
DEALERS WANTED
751-6143 751-4227

FLEA & ANTIQUE MARKET
INDOORS
Saturday Sept. 17 10-5 P.M.
ST. GEORGE HALL
818 Valley Road
Clifton
Space available.
Dealers call 779-2626

5th ANNUAL INDOOR/
OUTDOOR FLEA MARKET
ANTIQUES-CRAFTS SHOW
on October 15, 1983,
10:00 am to 5:00pm
Sponsored by the
NUTLEY HISTORICAL SOCIETY
65 Church Street, Nutley 07110
Free to public - Dealers
call Fred at 667-9239

HOME/THEATER ORGAN
Gulbransen-President Model
One of the finest organs made
2 full keyboards tab sets, draw
bars, piano, 32 selection
rhythm unit, walking bass.
Much more. Original cost
\$5600. Offers accepted.
Call 661-0584

CHINA CLOSET
2 yr old excell. cond.
solid pine.
LOVE SEAT & 2 SWIVEL
CHAIRS. Blue velvet. Price
negotiable.
759-4388

PIANOS & ORGANS

PIANO & ORGAN
WAREHOUSE SHOWROOM
FOR THE LARGEST PIANO & ORGAN
DEALER ON THE EAST COAST

NEW, USED FLOOR MODELS, DEMO'S
15 NATIONALLY FAMOUS BRANDS -
OVER 300 CATALOGUED INSTRUMENTS
GUARANTEED LOWEST PRICES
USED PIANOS & ORGANS FROM
\$99

RENTAL PURCHASE PLAN AVAILABLE
CALL, OR SEE ED BORGIA
744-1200

Baldwin - Hammond

DIV. OF ALLENBURG PIANO HOUSE, INC.
507 BLOOMFIELD AVENUE MONTCLAIR

NANNY D'S
INFANT
CARE CENTER

204 Washington Ave.
Belleville

FULL DAY SESSIONS
6 WEEKS TO
2 YEARS OLD

759-1524
Director Dolores Arlt

CHILD CARE

NURSERY SCHOOLS

MERCHANDISE

SELLING OUT 3 DAYS ONLY

82 MODELS

SOFAS \$149
CHAIRS \$59
BEDROOMS (5 Pc) \$199
KITCHEN SETS (7 Pc) \$99
PINE TABLES & CHAIRS \$149
QUEEN MATT & BOX SETS \$129
FULL MATT & BOX \$99
TWIN MATT & BOX \$79
FULL SIZE HOBDS \$19
QUEEN SLEEPERS \$119

SHARP'S
44 PASSAIC AVE. KEARNY, N.J.
991-0327

WANTED
USED AIR
CONDITIONERS
CASH 482-3681

THE BODY ROLLER
WOODEN MASSAGE
TOOL
\$11.95
free demonstration
210 MAIN AVE.
PASSAIC (Park)

SAVE 50-70% OFF
RETAIL PRICE
QUALITY NEW & PRE-OWNED
CHILDREN'S CLOTHING.
ONE MORE TIME
80 CENTRE ST.
NUTLEY
667-3765

3 AIR CONDITIONERS
PERFECT CONDITION. CALL
759-0978.

BARTER BOX
CONSIGNMENT
THRIFT SHOP
TUESDAY THRU SATURDAY
10AM - 5PM
ACCEPTING Used Clothing
Furniture Antiques
Household Goods
102 Walnut St., Montclair
744-9698

LIQUIDATION SERVICE
House & Estate Sales
Antiques/Furniture/Household
contents/priced & sold for you.
667-8463

TR-80 COLOR COMPUTER
32K w/disk drive, model VII
Printer, cassette recorder,
software (W/P CALC) \$1100.
Call evenings 667-0903.

EARLY AMERICAN
CONVERTIBLE QUEEN
SLEEPER. EXCELLENT COND.
\$250. Call 759-3358

MOVING, selling furniture,
closets, trunks, etc. If interested
call 482-3925 after 5 P.M.

CERAMICS
By "ANN"
Classes Monday & Wednesday
7-9:30 P.M.
Beginners Welcome
Completed ceramics for sale.
Firing Supplies - Greenware
31 Columbus Ave. Belleville
751-2862

USED DESK - CHAIRS
FLING CABINETS
EDELSTEIN OFFICE
FURNITURE WISE
946 Market St. Paterson
(Cor. Lakeview Ave. & Rt.
80)
523-6153

GOOD USED FURNITURE
Solid Oak
Table and four chairs, 1916
Edison Windy victrola, Sorted
Table lamps, child's school
desk and chair, old picture
frames, bedspread and
drapes, books, dishes, and
knick knacks. Much more
all in excellent condition.
Call 743-1864

6 MOUTER PLACE, BLOOMFIELD

CLEARANCE SALE
Good used furniture Solid Oak
Table and four chairs, 1916
Edison Windy victrola, Sorted
Table lamps, child's school
desk and chair, old picture
frames, bedspread and
drapes, books, dishes, and
knick knacks. Much more
all in excellent condition.
Call 743-1864

3 USED OFFICE DESKS
3 USED OFFICE/HOME
METAL FILE CABINETS
661-0584

LIL' CHARMER
DOLLSHOP

Dolls-Doll Supplies-Toddler-Doll
Houses & Doll House Furniture.
We buy & sell dolls. We also
t-y old dolls and parts. We do
repairs on dolls old or new. "If
it can be fixed, we will do it."
We have good used turn, dis-
hes & bric-a-brac.
Open Tuesday thru Saturday
10A.M. - 5P.M.
6-8 MOUTER PLACE, BLOOMFIELD
In Watssing Center
743-1864
Summer Sale Now On 1/36

CHERRY MAHOGANY DINING
ROOM SET. BUFFET
TABLE & 4 CHAIRS. CHINA
CABINET. \$175. 667-2528,
THURSDAY 4pm.

THOMASVILLE BEDROOM SET
5 pcs. King size head board,
triple dresser with 2 mirrors, 2
night stands & armoire, kitchen
set, wrought iron oval table
with white top & one leaf with
6 swivel chairs with yellow
leather seats. Excellent condi-
tion.
759-8876

EARLY CHRISTMAS SHOPPING
Site 8 Full length brown suede
coat. Like new. \$50. or best offer.

KIMBALL ELECTRO-SONIC
ORGAN with bench. 10 years
old. Good condition. Needs
tuning. \$600. 235-0288 after 4
P.M.

YARD SALE
3 FAMILIES
SAT. SEPT. 17th 9am to 3pm
RAIN DATE, SUNDAY
291 UNION AVE. BELLEVILLE
FURNITURE, HOUSEHOLD ITEMS,
CLOTHES, BOOKS, ETC.

FURNITURE, TURNABLE, AS-
ST. BRUSHES, T.V. LOTS OF
MISC.
SAT. & SUN.
SEPT. 17th & 18th
9am to 4pm
70 SATTERTHWAITE AVE.
NUTLEY

GARAGE SALE

GARAGE SALE SEPT. 17th &
18th. 10am to 6pm. 24
HILTON ST. BELLEVILLE

GARAGE SALE
28 WINDSOR PL. NUTLEY
SEPT. 17th & 18th
9am to 4pm
SOMETHING FOR EVERYONE.
HOUSEHOLD WARES,
JEWELRY, BRIC A BRAC,
BOOKS, TYPEWRITERS, AND
MORE.

YARD SALE
5 Lloyd Place Belleville
Sat. Sept. 17th 10am to 4pm
POOL TABLE, CLOTHING,
TOYS, BOOKS, Many extras.

YARD SALE
Sept. 16-17
10A.M.-4 P.M.
Sewing supplies, household
items, 1981 Puch Moped, 2
bicycles.
549 BLOOMFIELD AVE.
NUTLEY

GIANT YARD SALE
LIKE A MINI FLEA MARKET
DON'T MISS THIS ONE.
HOUSEHOLD ITEMS, SOME
FURNITURE & LOTS OF LOW
PRICED CLOTHING.
SEPT. 17th & 18th
10am to 3pm
36 MALONE AVE. BELLEVILLE
(off Washington Ave. or
Union Ave.)
Rain Date Oct. 1st & 2nd

YARD SALE. 21 BEECH ST.
BELLEVILLE 3 FAMILY. BABY
ITEMS. CLOTHES.
HOUSEHOLD. WOMAN'S
CLOTHES. BOOKS. ETC.
SEPT. 17th 9am to 5pm

GARAGE SALE. 67 WALDO
AVE. BLOOMFIELD. 10am to
4pm. SAT. & SUN. SEPT.
17th & 18th

HOUSE, IN & OUT SALE
Furniture, TV's, stereos, tools,
household items.
141 Birchwood Drive
Belleville
Friday Sept. 16
Saturday Sept. 17
10-4P.M.
Sunday Sept. 18 10-1P.M.
Cash only. No early birds.

4 FAMILY YARD SALE. Satur-
day & Sunday. Sept. 17-18. 9-
4P.M. 102 Smallwood Ave.,
Belleville.

GARAGE SALE. Saturday &
Sunday. Sept. 17-18. 10-4P.M.
65 Waldo St., Bloomfield.
Dishes, knick-knacks, etc.

GARAGE SALE
123 Myrtle Ave. Nutley
Friday & Saturday
Sept. 16-17 9-5P.M.
Infant furniture, infant & to-
dler toys, small appliances &
misc. items.

GARAGE SALE
BRIC A BRAC, PLENTY OF
ODDS & ENDS AND TONS
OF BOOKS
546 JORALEMON ST.
BELLEVILLE
SAT. SEPT. 17th
10am to 4pm

3 FAMILY
GARAGE SALE
Furniture, appliances,
household goods, fish tank,
clothes & much more.
49 Continental Ave. Belleville
Sat. Sept. 17
Sun. Sept. 18 10-5P.M.
No early birds, please

HOUSE & YARD SALE
MOVING
Bedroom, living room, kit &
patio furn. & misc. items.
Sept. 16 9-8P.M.
Sept. 17 9-4P.M.
20 CATHEDRAL AVE. NUTLEY

GIANT YARD SALE
MULTI FAMILY
BEHIND PETE'S DELI ON
PROSPECT ST. NUTLEY.
TOYS, CLOTHES, CHAIRS,
MISC.
SAT. SEPT. 17, 10am to 5pm
NO EARLY BIRDS

MOVING
EVERYTHING MUST GO
Something for everyone.
Inc. bric-a-brac & kitchen set,
windows, & electric heater.
Fri. Sept. 16, 10am to 3pm
Rain date, Saturday
13 Linden Ave. Belleville

NUTLEY 115 Rhoda Ave.
Sept. 16th

REAL ESTATE

REAL ESTATE

REAL ESTATE

REAL ESTATE

REAL ESTATE

REAL ESTATE

REAL ESTATE

REAL ESTATE

REAL ESTATE

180 Centre St.
Nutley, N.J. 07110
667-3440

GEORGE E. MAC MUNN CO.

REALTORS

100 Woodport Road
Sparta, N.J. 07871
729-8727



NUTLEY PARK BARGAIN ASKING \$69,900. JUST LISTED. Some modernization needed in this 3 bedroom colonial but truly a good investment. OPEN TO OFFERS - CALL NOW!



GARDENERS DELIGHT ON THIS 100x143 landscaped lot in NUTLEY PARK. Enjoy one floor living with 3 bedrooms, 2 full baths, lovely dining room with sliders to extra lg. Florida room overlooking gardens.

Your Home
Could Be
Featured
Here.

List With
Mac Munn

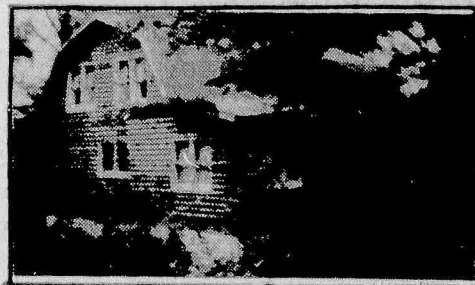
Look for this Emblem



REALTOR®



THE VIEW IS FREE - OVERLOOKING YANTACAW PARK 2 fireplaces, 4 bedrooms, 2 1/2 baths, att. gar. Asking \$104,900. Your offer may take it!



JUST ONE OF 35 MODELS -+ NEW LOG HOMES IN SPARTA. Unique designs-energy efficient - can be built anywhere. Come visit our new log home!

MERCHANDISE

MERCHANDISE

HELP WANTED

HELP WANTED

HELP WANTED

HELP WANTED

HELP WANTED

HELP WANTED

SITUATIONS WANTED

LOMBARDI Plumbing Supply

240 Montgomery St., Bloomfield, N.J.

- BATHROOM FIXTURES • BOILERS
- WATER HEATERS • KITCHEN SINKS
- KITCHEN & BASEMENT FAUCETS

WHOLESALE & RETAIL

743-1138/743-1139

ELECTRICIAN/MAINTENANCE

MAINTENANCE DEPT. OF MANUFACTURING PLANT. EXPERIENCED CONTROLS, MOTORS, CIRCUIT DIAGRAMS, TROUBLESHOOTING, ETC. IF YOU HAVE A SOLID BACKGROUND IN THE ABOVE WE OFFER A PERMANENT JOB WITH TOP SALARY & BENEFITS. REPLY:

P.O. BOX 524

KEARNY, N.J. 07032

BUSBOYS EXPERIENCED. NUTLEY MANOR CALL FOR PERSONAL INTERVIEW PAT 667-8899

MAIL CLERK

DISTRIBUTE MAIL. OPERATE OFFICE EQUIPMENT. RELIEF DRIVER FOR OFFICE SERVICES. LIBERAL COMPANY BENEFITS. WRITE:

P.O. BOX 524

KEARNY, N.J. 07032

SECRETARY

Immediate full time position open for assertive, mature, experienced person. Must be fully experienced in Horizon telephone system and have excellent typing and stenographic skills. Office located on Bloomfield-Newark line. Experienced only need apply. Call Jean Waldemore for appointment at 484-6405.

EXTERIOR HOME MAINTENANCE WORKER
Part time & Full time. Only strong reliable man need apply. Earn \$50 to \$70 per day while training to become a service manager, with income potential of \$500. to \$700. a week. Ground floor opportunity. Call 7am to 1pm only. 661-1625

DENTAL ASSISTANT
Part time for ULTRA MODERN PREVENTIVE BLOOMFIELD PRACTICE. Experience with X-ray license necessary. Great opportunity for the right person. 743-7575

RECEPTIONIST/ ASSISTANT
Full time. 2-7:30 P.M. Monday thru Friday. Typing required. NUTLEY CHIROPRACTIC CENTER 667-8118

SECURITY GUARDS
GUARDSMARK HAS IMMEDIATE FULL TIME & PART TIME POSITIONS IN CLIFTON & SECAUCUS AREAS. MUST HAVE OWN CAR, OWN PHONE & NO POLICE RECORD. APPLY AT:

1455 BROAD STREET BLOOMFIELD OR CALL 338-5511 FOR AN APPT.

SEWING MACHINE OPERATORS
SINGLE NEEDLE AND MERROW. EXPERIENCE PREFERRED.

DARIEN FASHIONS
225 BELLEVILLE AVE. BLOOMFIELD CALL 748-9353 8-3 P.M.

SECRETARY
MUST BE ABLE TO TAKE SHORTHAND AND TYPING. LEGAL BACKGROUND HELPFUL BUT NOT NECESSARY. EXCELLENT WORKING CONDITIONS. START IMMEDIATELY.

BOOKKEEPER/ SECRETARY
Complete charge of all bookkeeping. Light secretarial work. Apply in person. GARDEN STATE PET SUPPLIES 69 Williams Street Belleville

RETIRES & SENIOR CITIZENS
MUST HAVE CAR. EARN \$50 A DAY. 4 DAYS A WEEK. SUPERVISING HIGH SCHOOL STUDENTS DISTRIBUTING FLYERS DOOR TO DOOR. CALL 661-2971 9am to 11am

CLERK TYPIST
PART TIME EXPERIENCED R. MARASHIAN & CO. 743-0117

INTERIOR DECORATING SALES
\$15 to \$25 per hr. Need 5 sharp self motivated individuals. Training program. No experience nec. Car essential. Call 746-1131 after 3:30 & weekends.

TOOL & DIEMAKER

Expert progressive sectional dies, form grinding, build new dies, troubleshooting & tryout in press. Maintain dies. Excell opportunity. Liberal company benefits. Call, write or apply PERSONNEL DEPT 997-3000 Goody Products, Inc. 969 Newark Turnpike Harrison Ave., Kearny, NJ equal opportunity employer M/F

WAITRESSES/WAITERS EXPERIENCE NEEDED.

CALL FOR PERSONAL INTERVIEW. NUTLEY MANOR RESTAURANT 667-8899 ASK FOR PAT

SHIPPING & RECEIVING PERSON

FOR INDUSTRIAL SUPPLY COMPANY IN BELLEVILLE, N.J. MONDAY THRU FRIDAY. 8-5P.M. PAID HOLIDAYS, VACATION, COMPANY BENEFITS. \$4.50 PER HOUR TO START. PLEASE CONTACT DAN CORDASCO 483-8600

WOMEN/m

We expect to have a number of production jobs opening up in the near future. Work is clean and light. No manufacturing experience necessary. We will train you. Full time working hours 7:30-4 P.M. Don't wait! Come in now and file an application. GORDON CORP. 250 Glenwood Ave. Bloomfield

INSURANCE

Across the board technical bkgd in commercial lines, exc communication skills, LOCAL firm, 16K + fee pd. Call 783-4400 APPLE AGENCY 460 Bloomfield Ave. Montclair

BABYSITTER

Intelligent, capable young person to babysit occasional evenings. Radcliffe School area. Call 661-1475

PART TIME OFFICE PERSON

NEEDED FOR A RESPONSIBLE POSITION AT A BUSY CHIROPRACTIC OFFICE. EXPERIENCE PREFERRED BUT NOT NECESSARY. INCLUDING DIVERSIFIED DUTIES. CALL SANDY OR SUSIE. 759-3600

SEAMSTRESS

FOR CLIFTON/NUTLEY DRY CLEANERS CALL 235-0738

PART TIME AM OR PM

DRIVER & SHOP HELPER MILLER & SON 24 Belleville Ave. Belleville, N.J.

GARAGE SALE

4 FAMILY GARAGE SALE

114 Tappan Ave. Belleville Clothing, furniture, stereo, radios, toys & much more. Saturday & Sunday Sept. 17-18 9-4P.M.

6 FAMILY GARAGE SALE

4 Hampton Place, Nutley (Corner Park Ave.) Sept. 16-17 10-4P.M. Household, children's toys & furnishings, old trunks, clothing, antiques & collectibles-great sale. No checks.

HOUSE SALE

Bedrooms, living room, dishes, pots, lamps, etc. 24 May Place, Nutley 10-4 P.M. Saturday & Sunday Sept. 17-18

YARD SALE

Saturday Sept. 17 9A.M.-5P.M. 143 Passaic Ave. Belleville Rain date Oct. 1

NUTLEY YARD SALE

MULTI FAMILY Saturday Sept. 17 10-4PM 656 Bloomfield Ave. Maple spindle bed, children's clothing, picture frames, A/C, bric-a-brac & household items, old magazines.

WANTED TO BUY

Wanted for Cash OLD BOOKS & STAMPS OLD ORIENTAL RUGS ANTIQUES 10/20 Private Buyer 224-6205

I'M BUYING TOOLS!

Old • Used Any Type. Any Quantity Call "GENE" 696-4908 471-6666 Bet. 4pm-6pm Anytime 9/14

LICENSED GUN COLLECTOR

Wants to buy for cash: GUNS • SWORDS • DAGGERS • MEDALS • ESPECIALLY MILITARY ITEMS Evaluations & Appraisals All transactions confidential. CALL: 783-6145 2/16

"TOP PRICES PAID"

For Antiques • China Silver • Furniture Jewelry • Silver • Dolls, etc. Will buy one item or contents of house. 751-1587 759-7369 1/19

USED TV'S BOUGHT

CALL 673-3845 10/20

"ONE-STOP RECYCLING"

CASH FOR • ALUMINUM CANS • GLASS BOTTLES • ALL GRADES OF PAPER Since 1940 ZOZZARO BROS. INC. 36 CHESTNUT ST. (Off Hazel St.) CLIFTON

HELP WANTED

SALESPERSON

FOR WOMEN'S SPECIALTY SHOP IN UPPER MONTCLAIR. CALL MRS. ROSSI 744-0058

ASSISTANT BUYER

FOR WOMEN'S SPECIALTY SHOP IN UPPER MONTCLAIR. CALL MRS. ROSSI 744-0058

BABYSITTER WANTED

For two small children. Mondays, Tuesdays & Thursdays. 8am to 4pm. Must have own transp. Experienced. References req. For teachers. 751-4594 after 4pm

TELEPHONE WORK

FULL TIME 9am to 5pm PART TIME 5pm to 9pm No experience necessary. Work in Bloomfield office. Call for appt. 748-8503

WANTED TO BUY

HONEST PRICES PAID! FOR YOUR OLD & ANTIQUE ITEMS Furniture-China-Glass-Dolls-Toys-Pottery-Paintings-Linens-Paper Goods-Wicker "When in doubt, don't throw it out" Call 751-1323 House & Estate Sales Conducted 11/10

LIONEL IVES. AMERICAN FLYER MARKLIN AND OTHER TOY TRAINS

IMMEDIATE CASH TOP PRICES PAID CALL 635-2058 3/8

USED TV'S BOUGHT

CALL 673-3845 10/20

"TOP PRICES PAID"

For Antiques • China Silver • Furniture Jewelry • Silver • Dolls, etc. Will buy one item or contents of house. 751-1587 759-7369 1/19

USED TV'S BOUGHT

CALL 673-3845 10/20

"ONE-STOP RECYCLING"

CASH FOR • ALUMINUM CANS • GLASS BOTTLES • ALL GRADES OF PAPER Since 1940 ZOZZARO BROS. INC. 36 CHESTNUT ST. (Off Hazel St.) CLIFTON

YOUNG RESPONSIBLE WOMAN avail 12-6 P.M. for housekeeping & babysitting. I have references & reliable transportation. Call 748-3438 or 748-0280.

EXPERIENCED TYPIST WILL DO TYPING AT HOME. TERM PAPERS OR ANY ASSIGNMENT AT REASONABLE FEE. CALL CAROL ANYTIME AT 661-1451 9/22

LOST & FOUND
LOST PASSBOOK #01-230-2-00005793. First National State bank, Nutley Midtown office. Payment stopped, return book to bank.

FOUND: MEDIUM SIZE SHEPHERD. Male. Vicinity of Kingsland Park, Nutley. Approx 1 year old. Call 661-3516.

INSTRUCTIONS
By Carl Botti Learn guitar in your home. All ages. Mornings, afternoons and evenings available. Also: group lessons at a reduced rate. Guitar rentals available. Call 325-8748 12/29

FLUTE INSTRUCTOR
CONSERVATORY GRADUATE SEEKS STUDENTS. ALL LEVELS. CALL BARBARA 751-0973 10/27

MAKE MONEY BY THE MINUTE
Around the clock for doing 8 hours a week paperwork from home. Grows to a life-time income. Totally new ultra modern project unlike anything before. Still ground floor. No experience or education requirements. 13,000 people already doing. Division of major U.S. corporation. For details write: Opportunities Unlimited, P.O. Box 6179, Newark, N.J. 07106

BLOOMFIELD: APPLIANCE SERVICE. Excel. income producer. Excel location. Call for more details. Auteri, Realtor, 933-0306.

RESUMES
COMPASS ASSOCIATES CAREER COUNSELING & RESUME PREPARATION CALL 743-6501 MONDAY THRU SATURDAY 2/2

PETS
THE CELEBRITY PET GROOMER GROOMING DONE IN YOUR HOME OR APT. ANY PET. DONE AT YOUR CONVENIENCE. LOW RATES. CALL 429-8355 ASK FOR LEE

DOG TRAINING SERVICE
Private In Home Training Reasonable Rates • Time Payments References Available By Appointment Only 373-7114 11/24

FRISKY 2 yr. old spayed female. NEEDS LOTS OF LOVE & ATTENTION. FREE TO A GOOD HOME. CALL KIM 759-4782

FREE-2 CHOCOLATE POINT SIAMSE CATS. ONE BLACK & WHITE DOMESTIC CAT. SPAYED & DECAWED. Call 667-3011 after 7PM

YOUR AD COULD APPEAR HERE FOR AS LITTLE AS \$4.65 PER WEEK. CALL FOR MORE DETAILS. OUR FRIENDLY ADTAKERS WOULD BE HAPPY TO HELP YOU. CALL 667-3000

"JAZZ" IMPROVISATION LESSONS ON ALL INSTRUMENTS CALL STEVE 667-2196

NEED A MATH TUTOR? CALL 751-0172 ANY NIGHT BETWEEN 6-9 P.M.

TUTOR CERTIFIED TO TEACH SPECIAL & ELEMENTARY EDUCATION
Grades K-8 with special emphasis in reading & math. Contact: LINDA Mornings at 667-2667 3/8

INSTRUCTIONS

TRUMPET LESSONS

If you really want to play, LEARN IT THE RIGHT WAY

Call
GARY CARNEVALE
759-4475 after 5pm

NEED A MATH TUTOR?

CALL 751-0172
ANY NIGHT
BETWEEN 6-9 P.M.

PIANO LESSONS FOR BEGINNERS. TAUGHT IN PRIVATE STUDIO. CHILDREN & ADULTS WELCOME. CALL 661-1413.

MATH TUTOR. CERTIFIED TEACHER. CALL 667-7515.

REAL ESTATE

FOR RENT

BELLEVILLE
4 LOVELY ROOMS
First floor. Mod kitchen & bath. Mature couple preferred. \$359 + util.

MONTELL AGENCY
759-6900

RESPONSIBLE FEMALE IN LATE 20's TO SHARE 2 BEDROOM APT. IN BLOOMFIELD. REASONABLE RENT. CALL CAROL AFTER 7PM 429-9345

ATTENTION LANDLORDS!!
We screen & advertise free. Hundreds of tenants to choose from.

JERSEY RENTALS
228-9565

ALL AREAS SIZES & PRICES

Call & tell us what you need. 100's available.

HOME RENTALS

429-2560

***** OFFICE *****

Fully carpeted professional office. 3 rms with 2 lavs, centrally located. Reasonable. Also 5 rm apt. New mod kit. Near Yanticaw Park. Call Realtor:

MONACO REALTY
667-8000

BLOOMFIELD: Modern 1st floor, 5 rooms. Adults preferred. No pets. \$475 + util. 1 1/2 months security. Call 748-8161.

ARE YOU MOVING?
DON'T LEAVE YOUR FUEL OIL BEHIND.
WE PAY CASH PER GALLON
753-1522

NUTLEY
BEAUTIFULLY FURNISHED 4 LARGE ROOMS. Frpl in liv rm, wide plank flooring, high ceilings, new kit & bath. \$625 incl heat. Avail. Oct. 1.

BISSELL REALTORS
751-3311

BLOOMFIELD
3 rms, St. Val's, mod \$375 + heat. 1 bdrm garden apt. Avail 10-1 \$550 incl carpet, heat, hot water & appliances.

Luxury Condo liv rm with balcony, din rm, mod kit, tile bath, lg bdrm. Avail 10-15. \$600 incl heat, hot water, appliances & garage.

BELLEVILLE
Luxury apt. liv rm, din rm, mod kit, tile bath, lg bdrm. Vacant. \$495 incl heat, hot water & gas.

NUTLEY
4 rms with mod kit, tile bath. Avail 10-1. \$325. One person, no water, carpet & gas.

TO INSPECT CALL
Arthur L. Grutt, Realtor
GLENWOOD REAL ESTATE AGENCY
429-7380
905 Broad St., Bloomfield

NUTLEY. 5 rms, plus full attic/basement. One child ok. NO PETS. 661-1475 Avail. Nov. 1st.

NUTLEY
BRAND NEW 3 ROOM APARTMENT
Professional person preferred. Private parking. \$400 month incl. utilities. Avail. Oct. 1st. Convenient to New York bus. Walking distance to Hoffmann La Roche.

Call 235-0680

BLOOMFIELD: Nice area. 3 modern rooms. All util. included. \$425. One person, no pets. 743-4576 after 5P.M.

OFFICE SPACE

APPROXIMATELY 600 SQUARE FEET
Second floor, across from Shop-Rite.

Available Now! \$400/mo.

Call
667-0077

REAL ESTATE

FOR RENT

BLOOMFIELD

5 lge. rooms 2nd floor. NO PETS. Small children ok \$495 mo. Supply own heat. Avail. Oct. 1st, 1983
Call 748-8000
b/w. 9am & 5pm

BELLEVILLE

TENANTS NO FEE
3 rooms, 2nd floor. Heat supplied. \$475. Oct. 1 occupancy. Ask for Sat 751-2301

NUTLEY

4 1/2 rms, Couple pref. \$400 + util.

BLOOMFIELD

5 rms, Children O.K. \$500 + util.

LYNDHURST

6 rms. Adults pref. \$650 util. incl.

COSTANTINE REALTY

REALTOR 667-7070

ATTENTION LANDLORDS!!

APARTMENTS WANTED WE SCREEN ALL PROSPECTIVE TENANTS. NO FEE TO LANDLORD.

COSTANTINE REALTY

289 FRANKLIN AVE. NUTLEY, N.J.

REALTOR 667-7070

NUTLEY

GROUND FLOOR PROFESSIONAL OFFICE

1500 square ft. PRIME LOCATION ON FRANKLIN AVE. CALL 667-0600

NUTLEY

3 1/2 rm apt. RESIDENTIAL

DEAD END. \$475 Includes heat, hot water & parking. Call 235-9212

NORTH NEWARK

2 1/2 rms, heat, hot water supplied. Elevator, laundry room. \$260 month, one month security. Available immediately. Call 997-4514 or 484-0969

OFFICE SPACE FOR RENT

SECOND FLOOR PEARLESS BLDG. APPROX. 425 SQ. FT. CALL 667-1816

FRANKLIN STATIONARY

384 FRANKLIN AVE., NUTLEY

NUTLEY

GARDEN APT. 3 1/2 rms.

\$450. mo. Avail Oct. 1st
CENTURY 21 HOMES R US
751-8800

REAL ESTATE

FOR SALE

REAL ESTATE

FOR SALE

REAL ESTATE

FOR SALE

BELLEVILLE

\$1,000 DOWN TO QUALIFIED BUYER COLONIAL- 6 rms with mod kit, excel starter home. Located above Washington Ave. Reduced to \$54,900.

BLOOMFIELD

RANCH IN PARK - \$74,900 6 rms, liv rm with frpl, din rm, mod kit, tile bath, 3 bdrms, extra lg. finished expansion. New oil heat. Mint cond.

NUTLEY

6 FAMILY Stucco ext. 3 one bdrm apts & 3 two bdrm apts. Sep heat, hot water & util. Asking \$110,000.

BELLEVILLE

9% MORTGAGE * COLONIAL-Liv rm, din rm, mod kit, lg Florida rm, 3 bdrms, mod bath, fin rec rm, *CAMP GPM 30 year mtg avail to qual buyer with 10% down. \$69,900.

BLOOMFIELD

3 rms, St. Val's, mod \$375 + heat. 1 bdrm garden apt. Avail 10-1 \$550 incl carpet, heat, hot water & appliances.

Luxury Condo liv rm with balcony, din rm, mod kit, tile bath, lg bdrm. Avail 10-15. \$600 incl heat, hot water, appliances & garage.

BELLEVILLE
Luxury apt. liv rm, din rm, mod kit, tile bath, lg bdrm. Vacant. \$495 incl heat, hot water & gas.

NUTLEY
4 rms with mod kit, tile bath. Avail 10-1. \$325. One person, no water, carpet & gas.

TO INSPECT CALL

Arthur L. Grutt, Realtor
GLENWOOD REAL ESTATE AGENCY
429-7380
905 Broad St., Bloomfield

BLOOMFIELD

5 rms, 1st fl. VACANT. Garage, storage. \$450. mo. plus utilities.

THIRD RIVER REALTY

Realtor 429-2450

REAL ESTATE

FOR RENT

REAL ESTATE

FOR RENT

REAL ESTATE

FOR RENT

OFFICE SPACE

APPROXIMATELY 600 SQUARE FEET
Second floor, across from Shop-Rite.

Available Now! \$400/mo.

Call
667-0077

REAL ESTATE

FOR SALE

NUTLEY

JUST LISTED CENTRE STREET
3 family. Has 5-5 & 4. Close to stores & trans, mod eat-in kitchen & baths, lots of storage space. Be first to see. Asking \$99,500.

3 FAMILY WASHINGTON AVE

3 1/2-3 1/2-6 1/2. All new kitchens, sep util, fenced in yard with fruit trees & grape vines on extra deep lot. Asking \$129,900.

OFFERS WANTED WALNUT STREET

This Yanticaw 7 rm Colonial is in move-in-cond. Had mod eat-in kit, 2 full baths, den & screened back porch. Call to inspect.

HOWARD PLACE

This large center hall custom built Colonial has 5 zone heating to save on winter bills. 2 frpls, fam rm & laundry rm on 1st fl. 3 lg bdrms. Fin bsmt. with kit & office. Many extras. Call for details.

CARLA A. ORECHIO AGCY

667-7733

Eves: Mario 667-8189

BELLEVILLE

ONE FAMILY RANCH
Above Union Ave. 6 yrs young 3 bdrm. lge. eat in kit. Mod. thru-out. Only \$74,900.

3 FAMILY

5-5-4. Lge. apts. all alum. sided ext. plus 3 car gar. Asking \$95,000.

HOMES R US

544 Washington Ave. Belleville 751-8800

Independently owned & operated

PASSAIC

NEAR CLIFTON/ROSEMAWR SECTION DWASLINE ROAD

Charming English Cottage. Nicely landscaped. 4 bdrms, 2 1/2 baths, fin bsmt. Many features. Prestigious area. Offered at \$136,500.

BELLEVILLE

4 FAMILY OPPORTUNITY
Frame dwelling, 4 heating units. Great loc. \$124,900. Call to inspect.

Since 1917
EUGENE J. Reilly's

Real Estate Insurance
Realtor 759-1682

REAL ESTATE

FOR SALE

REAL ESTATE

FOR SALE

REAL ESTATE

FOR SALE

REAL ESTATE

FOR SALE

REAL ESTATE

FOR SALE

REAL ESTATE

FOR SALE

REAL ESTATE

FOR SALE

REAL ESTATE

FOR SALE

REAL ESTATE

FOR SALE

REAL ESTATE

FOR SALE

REAL ESTATE

FOR SALE

REAL ESTATE

FOR SALE

REAL ESTATE

FOR SALE

REAL ESTATE

FOR SALE

REAL ESTATE

FOR SALE

REAL ESTATE

FOR SALE

REAL ESTATE

FOR SALE

REAL ESTATE

FOR SALE

REAL ESTATE

FOR SALE

REAL ESTATE

FOR SALE

REAL ESTATE

FOR SALE

BELLEVILLE-NEW LISTING

Be the first to see this maintenance free Cape style home with oversized garage. Located near Nutley line off Franklin Ave. 2 bdrms + lg rm on second, 1 1/2 mod baths, mod kit, move-in-cond. \$79,500. Call us for an appt. REALTOR.

RECORDS REALTY

3 High St. Nutley 667-5500

WANTED TO RENT

GARAGE WANTED. CALL

998-5943.

NURSE SEEKS STUDIO APT. IN NUTLEY. EXCELLENT REFERENCES. UP TO \$350 a mo. 450-0854

DRIVEWAY OR GARAGE NEEDED

FROM OCT. 1st TO JAN. 1st. ONLY. CALL CHET JELINSKI AT 748-9149 8am to 8pm MON. THRU SAT.

LANDLORDS - let us help you rent your apartments! We'll screen all prospective tenants, bring them in & give you the final decision on the rental. Tenant pays fee upon approval. NO FEE TO YOU.

Eves call Marilyn 667-5526 or REALTOR: RECORDS REALTY 667-5500

SENIOR CITIZENS

Live in comfort without fear. Luxurious accommodations. Excel. food, residential community. Rate from \$384 pr. mo. for room, food & laundry. 484-3676

BOYD'ING

REAL ESTATE BROKERS!

To Place Photo Ads In The Real Estate Review Section
Call Frank Ostrow 667-2700

REAL ESTATE BROKERS!

To Place Photo Ads In The Real Estate Review Section
Call Frank Ostrow 667-2700

REAL ESTATE BROKERS!

To Place Photo Ads In The Real Estate Review Section
Call Frank Ostrow 667-2700

REAL ESTATE BROKERS!

To Place Photo Ads In The Real Estate Review Section
Call Frank Ostrow 667-2700

REAL ESTATE BROKERS!

To Place Photo Ads In The Real Estate Review Section
Call Frank Ostrow 667-2700

REAL ESTATE BROKERS!

To Place Photo Ads In The Real Estate Review Section
Call Frank Ostrow 667-2700

REAL ESTATE BROKERS!

To Place Photo Ads In The Real Estate Review Section
Call Frank Ostrow 667-2700

REAL ESTATE BROKERS!

To Place Photo Ads In The Real Estate Review Section
Call Frank Ostrow 667-2700

REAL ESTATE BROKERS!

To Place Photo Ads In The Real Estate Review Section
Call Frank Ostrow 667-2700

REAL ESTATE BROKERS!

To Place Photo Ads In The Real Estate Review Section
Call Frank Ostrow 667-2700

REAL ESTATE BROKERS!

To Place Photo Ads In The Real Estate Review Section
Call Frank Ostrow 667-2700

REAL ESTATE BROKERS!

To Place Photo Ads In The Real Estate Review Section
Call Frank Ostrow 667-2700

REAL ESTATE BROKERS!

To Place Photo Ads In The Real Estate Review Section
Call Frank Ostrow 667-2700

REAL ESTATE BROKERS!

To Place Photo Ads In The Real Estate Review Section
Call Frank Ostrow 667-2700

REAL ESTATE BROKERS!

To Place Photo Ads In The Real Estate Review Section
Call Frank Ostrow 667-2700

REAL ESTATE BROKERS!

To Place Photo Ads In The Real Estate Review Section
Call Frank Ostrow 667-2700

REAL ESTATE BROKERS!

To Place Photo Ads In The Real Estate Review Section
Call Frank Ostrow 667-2700

REAL ESTATE BROKERS!

To Place Photo Ads In The Real Estate Review Section
Call Frank Ostrow 667-2700

REAL ESTATE BROKERS!

To Place Photo Ads In The Real Estate Review Section
Call Frank Ostrow 667-2700

REAL ESTATE BROKERS!

To Place Photo Ads In The Real Estate Review Section
Call Frank Ostrow 667-2700

REAL ESTATE BROKERS!

To Place Photo Ads In The Real Estate Review Section
Call Frank Ostrow 667-2700

REAL ESTATE BROKERS!

To Place Photo Ads In The Real Estate Review Section
Call Frank Ostrow 667-2700

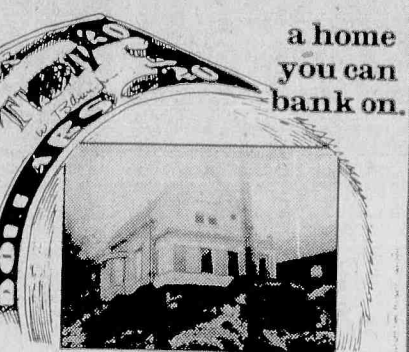
Real Estate REVIEW

A WEEKLY REVIEW OF AREA HOMES In The Nutley Sun, Belleville Times, and Essex County Times



a home you can bank on.

SPACIOUS - 4 BR Colonial, ultra-modern kitchen, 2 baths, finished basement/w kitchen. Can be used as mother/daughter. Many extras. Call for appointment \$93,000.



a home you can bank on.

JUST REDUCED - 3 BR col. with LR, DR, Mod El kit and 2 car garage \$56,900. Evenings call Paul 857-0693.

Century 21 WAYNE K. THOMAS REALTORS

277 Broad Street Bloomfield, New Jersey (201) 429-7400

Each office independently owned and operated
MEMBER OF BLOOMFIELD GLEN RIDGE NUTLEY, BELLEVILLE BOARD OF REALTORS

New Jersey. Also known as Block No. 265 Lot No. 26 on the Tax Maps of said City of

SHOPRITE • BIG BRAND BASH

GREEN GIANT WHOLE KERNEL Niblets Corn
3 \$1.00
 12-oz. cans

Coke or Tab
99¢
 2 liter btl.

BLUE RIBBON Paper Towels
3 \$1.00
 100-ct. rolls

Kraft Mayonnaise
99¢
 1-qt. jar

REGULAR OR NATURAL
Mott's Apple Juice 1/2-gal. btl. **99¢**

ALL VAR. EXCEPT LEMON, COCONUT ALMOND, OR COCONUT PECAN PILLSBURY
RTS Frosting 1-lb. 2 1/2-oz. can **99¢**

ALL VARIETIES BETTY CROCKER SUPERMOIST
Cake Mix 1-lb. 2 1/2-oz. pkg. **59¢**

REGULAR OR UNBLEACHED
Gold Medal Flour 5-lb. bag **79¢**

REG. OR GOLDBEN, ShopRite
6-Pack Raisins 9-oz. T.W. pkg. **79¢**

AUNT JEMIMA
Pancake Syrup 1-lb. 8-oz. btl. **\$1.49**

INSTANT COFFEE
Chock Full O'Nuts 10-oz. jar **\$2.99**

ALL VARIETIES EXCEPT DECAF, GROUND
Savarin Coffee 1-lb. can **\$1.89**

ALL VARIETIES
Kellogg's Pop Tarts 10 1/2-oz. box **79¢**

WHY PAY MORE
Red Rose Tea Bags 100-ct. box **\$1.39**

NEW THICKER, TOMATO
Hunt's Ketchup 2-lb. btl. **89¢**

KRAFT SALAD DRESSING
Miracle Whip qt. jar **\$1.39**

CHUNK LIGHT TUNA IN OIL OR WATER
Chicken Of The Sea 6 1/2-oz. can **69¢**

SOLID PACK, IN OIL OR WATER
Starkist White Tuna 7-oz. can **89¢**

DeLAURENTIS ALL VARIETIES
Imported Pasta 2 1-lb. pkgs. **89¢**

NO. 8, NO. 9, NO. 32, NO. 35
Prince Pasta 3 1-lb. boxes **\$1.00**

ALL VARIETIES
Aunt Millies Sauce 1-pt. 10-oz. jar **\$1.19**

SACRAMENTO REG. OR PLUS
Tomato Juice 1-qt. 14-oz. can **79¢**

WHY PAY MORE
Wesson Oil gal. cont. **\$3.99**

REALEMON
Lemon Juice 1-qt. btl. **99¢**

CRUSHED, SLICED, CHUNK IN JUICE
Dole Pineapple 1-lb. 4-oz. can **69¢**

STOKELY
Tomato Sauce 5 8-oz. cans **99¢**

APPLE CRANBERRY, GRAPE OR ORANGE
Hi-C Fruit Drinks 1/2-gal. btl. **79¢**

MOTT'S
Applesauce 1-lb. 9-oz. jar **59¢**

WHY PAY MORE
V-8 Juice 1-qt. 14-oz. can **79¢**

CREAMY OR CHUNKY SUPERMAN
Peanut Butter 1-lb. 2-oz. jar **99¢**

ALL VAR. EXCEPT WILD RICE
Rice-A-Roni 6 1/4-oz. box **49¢**

FINE, MED., WIDE HOMESTYLE
Penn-Dutch Noodles 1-lb. bag **59¢**

IMPORTED PLUM
Pope Tomatoes 1-lb. 12-oz. can **59¢**

LAUNDRY DETERGENT
Dynamo Liquid 1/2-gal. cont. **\$2.59**

FABRIC SOFTENER
Final Touch 1/2-gal. btl. **\$1.89**

ALL VARIETIES, 1 PLY
Viva Napkins 140 ct. of 50 pkg. **69¢**

ShopRite
Lawn & Leaf Bags box of 10 **\$1.49**

TUFF STUFF
Foam Plates pkg. of 50 **99¢**

REGULAR, BEEF OR LIVER/BACON GAINES
Gravy Train 25-lb. bag **\$6.99**

ALL VARIETIES
Cycle Dog Food 3 14-oz. cans **\$1.00**

The Fish Market

FRESH, NEW ENGLAND
Scrod Cod Fillet* lb. **\$1.99**

FRESH, NEW ENGLAND
Monkfish Fillet* lb. **\$2.49**

FRESH
Cherry Stone Clams* doz. **\$1.99**

26 TO 30 PER LB., FROZEN & THAWED
Ex. Large Shrimp lb. **\$7.59**

The MEATing® Place

GRADE 'A' FROZEN
Tyson Cornish Hens lb. **69¢**

U.S.D.A. CHOICE
Beef Shoulder **\$1.97**

London Broil lb. **\$1.97**

BEEF LOIN W/TENDERLOIN
Sirloin Steaks lb. **\$2.77**

BEEF LOIN
Porterhouse or T-Bone Steak lb. **\$3.57**

BONELESS CHUCK
Beef For Stew lb. **\$1.87**

RIB CUT PORK ROAST OR CENTER CUT
Pork Chops lb. **\$1.97**

9/11 CHOPS, LOIN PORTION
Pork Chop Combo lb. **\$1.57**

RIB PORTION FOR BARBECUE
Pork Loin lb. **\$1.67**

NO BONES ABOUT IT, SHENANDOAH
Boneless Turkey lb. **\$1.39**

WHY PAY MORE
Mr. Turkey Kielbasa lb. **\$1.59**

The Produce Place

CHIQUITA, DOLE & OTHER BRANDS
Golden Bananas 3 lbs. **\$1.00**

THOMPSON
Seedless Grapes lb. **79¢**

113 SIZE SUNKIST
Valencia Oranges for **10 99¢**

STORE SLICED Turkey Breast lb. **\$2.89**

STORE SLICED COOKED PASTRAMI OR
Corned Beef lb. **\$2.99**

STORE SLICED IMPORTED AUSTRIAN
Swiss Cheese 1/2-lb. **\$1.69**

MAJESTY IMPORTED COOKED
Danish Ham 1/2-lb. **\$1.49**

NOT LESS THAN
80% Lean Ground Beef ANY SIZE PKG. lb. **\$1.47**

7" TOP RIB, OFF
Beef Rib Steaks lb. **\$2.97**

GREAT FOR DIETS, THORN APPLE VALLEY SMOKED
Turkey Ham lb. **\$1.49**

THORN APPLE VALLEY CORNED BEEF
Thick Cut Brisket lb. **\$1.59**

FULL OF COUNTRY GOODNESS FROM NEARBY FARMS
Sweet Corn 6 ears **99¢**

CALIFORNIA NUTRITIOUS
Sweet Carrots 2 1-lb. bags **79¢**

PERFECT FOR LUNCH BOXES OR SNACK'N, SUNKIST
Valencia Oranges 4-lb. bag **\$1.29**

FOR FLAVOR, REFRESHMENT & HEALTH
Bartlett Pears lb. **49¢**

LOW IN CALORIES, CRISP
Pascal Celery stalk **59¢**

FIRST OF THE SEASON
Crisp Red Apples 3-lb. bag **99¢**

FRESH & TENDER
Chicory Or Escarole lb. **49¢**

FRESH & FLAVORFUL
Bosc Pears lb. **49¢**

WHY PAY MORE Minute Maid Orange Juice 1/2-gal. cart. **\$1.29**

AMERICAN
Kraft Singles 1-lb. pkg. **\$1.89**

REGULAR QUARTERS VEGETABLE MARGARINE
Land-O-Lakes 2 1-lb. pkgs. **89¢**

ShopRite
Chocolate Milk 1-qt. cont. **69¢**

Money Saving Pak 5-lbs. or more per pkg.

ShopRite
Polska Kielbasa lb. **\$1.89**

CENTER CUT BONELESS
Beef Chuck Steak lb. **\$1.97**

BEEF RIB BONELESS
Club Steaks lb. **\$3.97**

General Merchandise

WIREBOUND
1-Subject Notebook 10 1/2" x 8 1/2" 70 ct. **3 \$1.00**

STANDARD SIZE AVAILABLE IN SOFT, MED. OR FIRM SUPPORT, CONCORD FORTRELL POLYESTER

Bed Pillows 2 for **\$7.99**

See Store Display For Other ShopRite Fall Sale Items

FUNK & WAGNALLS, VOL. #5
Encyclopedia ea. **\$3.99**

FUNK & WAGNALLS
World Atlas ea. **\$5.98**

ShopRite LOOSELEAF
Filler Paper 300-ct. pkg. **89¢**

5-SUBJECT RULED WIREBOUND, WITABS, 250-CT.
College Notebook 11 1/4" x 8 1/2" **\$2.99**

ERASABLE
Bic Pens pkg. of 3 **99¢**

SCRIPTO YELLOW
Mechanical Pencil pkg. of 3 **99¢**

STEAM-N-CURL COMPACT #E2030
Curling Iron (IN STORES WITH APPLIANCES) ea. **\$5.99**

10W40
Mobil Motor Oil qt. **79¢**

MEAT OR BEEF Oscar Mayer Bologna 12-oz. pkg. **99¢**

ARMOUR
Canned Ham 5-lb. can **\$8.49**

IMPORTED
Dak Sliced Ham 1-lb. pkg. **\$2.79**

WHITE'S THREE KINGS
Sliced Bacon 1-lb. pkg. **\$1.39**

WHY PAY MORE
Tampax Maxi Thins box of 12 **99¢**

MOUThWASH
Listerine 32-oz. btl. **\$2.49**

REGULAR OR CONDITION SHAMPOO
Head & Shoulders 15-oz. btl. **\$3.00**

REGULAR OR UNSCENTED DEODORANT
Ban Roll-On 1.5-oz. conts. **\$3.00**

THREE PACK
Scripto Lighter 3-pack **\$1.00**

The Bakery Place

APPLE PUMPKIN COG CUSTARD
ShopRite 8" Pies 1-oz. box **99¢**

SAVE40 ASSORTED VARIETIES, ShopRite
Snack Cakes 14-16-oz. box **\$1.29**

SAVE10 ShopRite SANDWICH OR REGULAR
White Bread 2 22-oz. lvs. **99¢**

ASSORTED VARIETIES
ShopRite Pretzels 16-oz. bag **69¢**

The Family Pharmacy Dept.		
Description	Size	Price
(Methyldopa) * Aldomet Tablets 250-mg.	100's	\$14.99
(Cimetidine) * Tagamet Tablets 300-mg.	100's	\$29.99
(Furosemide) * Lasix Tablets 40-mg.	100's	\$11.99
(Metoprolol Tartrate) * Lopressor Tablets 50-mg.	100's	\$17.99

ShopRite Coupon ECR 352

WITH THIS COUPON
 ONE (1) 20-oz. APPLE, PUMPKIN, COCONUT CUSTARD OR LEMON MERINGUE

8" ShopRite Pies **79¢**

Coupon good at any ShopRite market. Limit one per family. Effective Sun., Sept. 11 thru Sat., Sept. 17, 1983.

SAVE 20¢

The Bakery Place

APPLE PUMPKIN COG CUSTARD
ShopRite 8" Pies 1-oz. box **99¢**

SAVE40 ASSORTED VARIETIES, ShopRite
Snack Cakes 14-16-oz. box **\$1.29**

SAVE10 ShopRite SANDWICH OR REGULAR
White Bread 2 22-oz. lvs. **99¢**

ASSORTED VARIETIES
ShopRite Pretzels 16-oz. bag **69¢**

General Merchandise

WIREBOUND
1-Subject Notebook 10 1/2" x 8 1/2" 70 ct. **3 \$1.00**

STANDARD SIZE AVAILABLE IN SOFT, MED. OR FIRM SUPPORT, CONCORD FORTRELL POLYESTER

Bed Pillows 2 for **\$7.99**

See Store Display For Other ShopRite Fall Sale Items

FUNK & WAGNALLS, VOL. #5
Encyclopedia ea. **\$3.99**

FUNK & WAGNALLS
World Atlas ea. **\$5.98**

ShopRite LOOSELEAF
Filler Paper 300-ct. pkg. **89¢**

5-SUBJECT RULED WIREBOUND, WITABS, 250-CT.
College Notebook 11 1/4" x 8 1/2" **\$2.99**

ERASABLE
Bic Pens pkg. of 3 **99¢**

SCRIPTO YELLOW
Mechanical Pencil pkg. of 3 **99¢**

STEAM-N-CURL COMPACT #E2030
Curling Iron (IN STORES WITH APPLIANCES) ea. **\$5.99**

10W40
Mobil Motor Oil qt. **79¢**

We're Not Just A Supermarket... We're ShopRite

In order to assure a sufficient supply of sales items for all our customers, we must reserve the right to limit the purchase to units of 4 of any sales items, except where otherwise noted. Not responsible for typographical errors. Prices effective Sun., Sept. 11 thru Sat., Sept. 17, 1983. None sold to other retailers or wholesalers. Artwork does not necessarily represent item on sale, it is for display purposes only. Copyright WAKEFERN FOOD CORPORATION 1983.